

Hangzhou Xiongmai Technology Co., Ltd

VMS User Manual

Customer Service Center

Customer Service Center

2015-05-15

Content

1	Overviews.....	3
1.1	Description	3
1.2	Installation environment	3
2	Installation	5
2.1	Preparation	5
2.2	Installation	5
3	Functional Specification.....	6
3.1	Log-in page.....	6
3.2	Wizard	7
3.3	Device Manager	8
3.3.1	Search IP in LAN and Add.....	9
3.3.2	Add Group.....	9
3.3.3	Add devices manually	10
3.3.4	Close window	11
3.4	Monitoring	12
3.4.1	View	13
3.4.2	other features	14
3.5	Playback	15
3.6	Record Settings	17
3.6.1	Storage settings	17
3.6.3	Record settings	17
3.7	Log.....	17
3.8	Alarm info	18
3.9	Device Config	19
3.9.1	Network	20
3.9.1.1	Set device's IP	20

3.9.1.2	PPPOE.....	21
3.9.1.3	Email	21
3.9.1.4	FTP.....	22
3.9.1.5	RTSP	31
3.9.1.6	Cloud	31
3.9.1.7	DDNS	32
3.9.1.8	DAS.....	32
3.9.2	Encode	34
3.9.3	Camera parameters	35
3.9.4	System.....	36
3.9.5	Version info.....	36
3.9.6	Exception handling.....	37
3.9.7	video detect	38
3.9.8	Disk manager	38
3.9.9	Record config	39
3.10	Alarm config.....	39
3.11	Tour	40
3.12	System Config	41
3.13	Extensions	41

1 Overviews

1.1 Description

VMS is a newly developed client software for our products . The suppressible toolbar, succinct GUI and rich functionality make it a very intelligent and user-friendly monitoring management software which can be used in various scenes.

窗口支持自定义，样式丰富，满足用户多种监控环境的需求。

VMS support talk with device, instantaneous screenshots

VMS support multiple video preview at the same time.

VMS support intelligent tour plans to displace manual operations.

You can easily search video files that not only recorded in PC (Local side) but also recorded in devices.

Different alarm features meet customer's every need.

The further extensions---"My cloud" and "Maps" will make it more convenient for practical application.

1.2 Installation environment

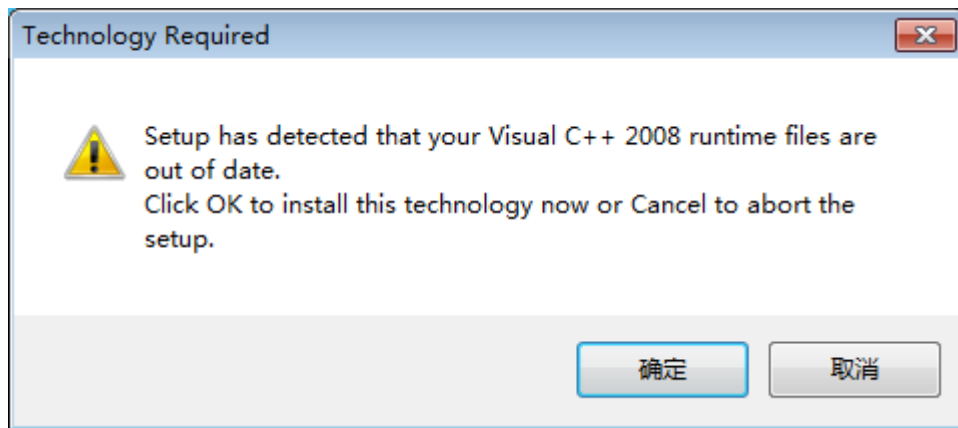
Operating system:	Windows system(it would support Mac and Linux system in subsequent version)
CPU:	Above 2.4GHz
Memory:	Above 1GB
Graphics:	Discrete graphics

- In theory the preview number is 64 * 4. The actual preview number is limited by the properties of the server, the resolution of devices (bit rate) ,network bandwidth etc.

2 Installation

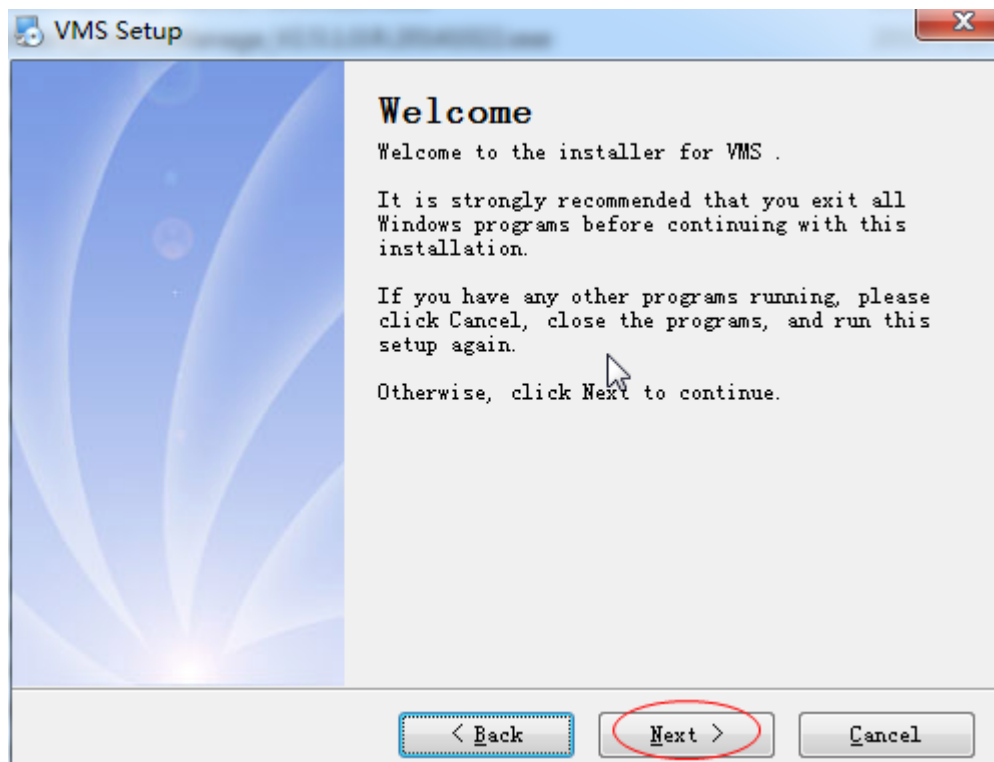
2.1 Preparation

When installing the VMS, it would prompt you to install Visual C++ 2008 first. This is to ensure your PC has installed all library files the VMS needs. So if you see the following pop-up notification, please click yes to install it.



2.2 Installation

After installing Visual C++ 2008, choose language and start installing the software.



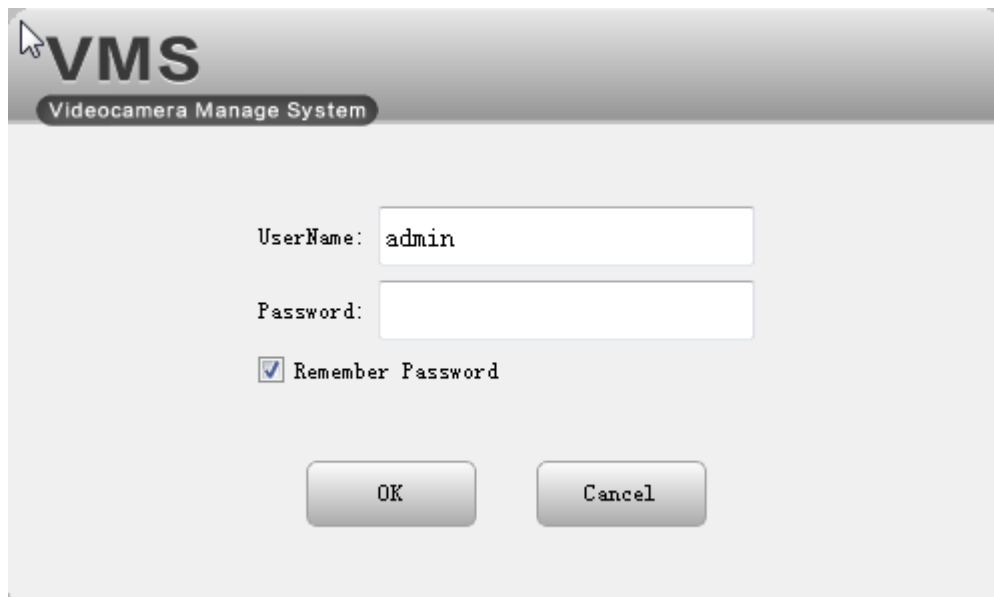
Double click the shortcut icon on the desktop:



3 Functional Specification

3.1 Log-in page

Start VMS:

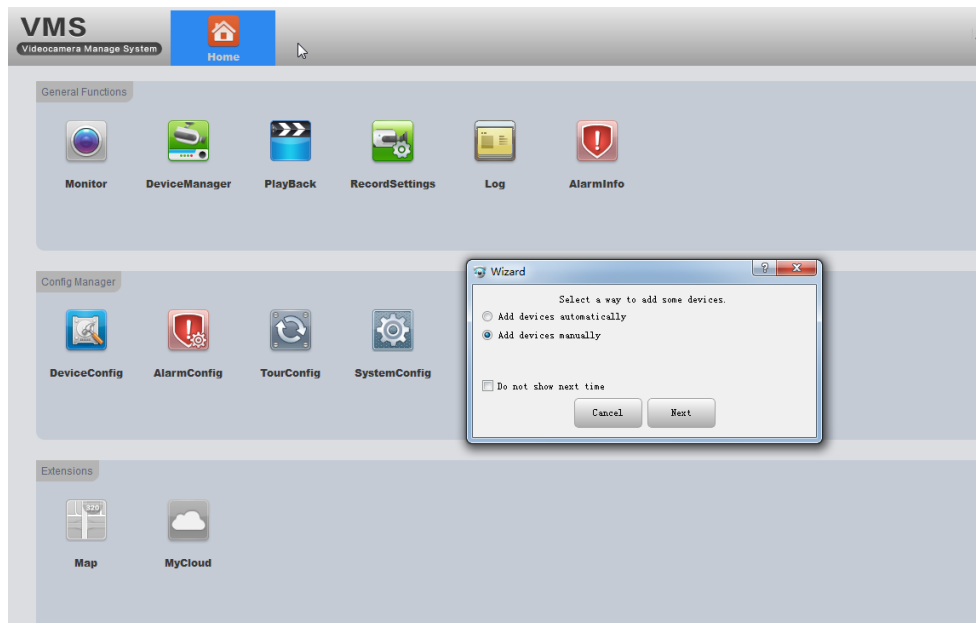
The image shows a login window for the VMS (Videocamera Manage System). The window has a title bar with the VMS logo and the text 'VMS Videocamera Manage System'. Inside the window, there are two text input fields. The first field is labeled 'UserName:' and contains the text 'admin'. The second field is labeled 'Password:' and is empty. Below the password field, there is a checkbox labeled 'Remember Password' which is checked. At the bottom of the window, there are two buttons: 'OK' and 'Cancel'.

Input user name and password, click OK.

3.2 Wizard

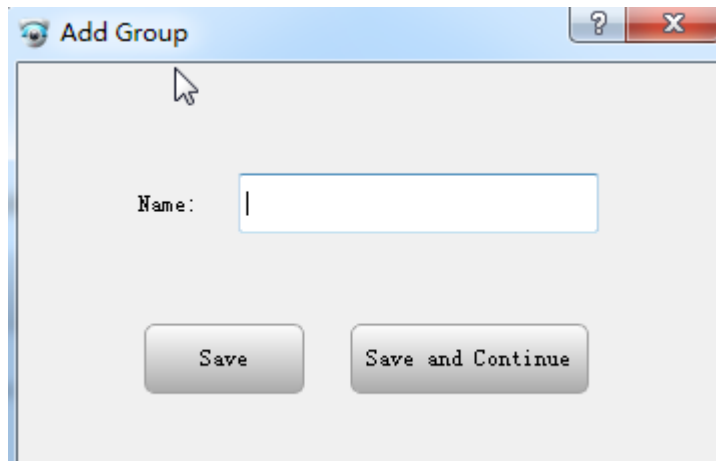
There is a configuration wizard when you open the software for the first time. It is to select a way to add devices:

Add devices automatically:	auto add devices (in the same LAN) to VMS.
Add devices manually:	when you choose this way, you need to go to 'Device Manager' to add devices manually.
Do not show next time:	Tick it, this wizard won't show again
Next:	Click it, it will go to the 'Device Manager' page.
Cancel:	To exit the wizard

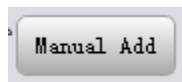


3.3 Device Manager

- If you choose “add devices automatically” in wizard , it will come to this page and countdown to auto add devices.
- If you choose “Add devices manually” in wizard, you can either choose the discovered devices to add directly (as shown in the following picture) or you can click “Manual add” to add manually(See 3.3.3).



3.3.3 Add devices manually



click this button to add device manually. The interface is as follows:

Device name:		Edit a name for the device to identify different devices easily.
Group:		select a group for this device
Log-in Type:		Choose a way to add device,by IP/Domain or by Cloud ID
By IP/Domain	IP/Domain	Device's IP/Domain
	Port	Device's TCP port
By Cloud ID	Cloud ID(SN)	Device's Cloud ID(Serial Number)
User name, Password		Device's Username and password

Add Device

Device Name:

Group:

Login Type:

IP/Domain:

Port:

UserName:

Password:

Add Device

Device Name:

Group:

Login Type:

Cloud ID (Serial NO):

UserName:

Password:

- If you need to add more than one devices , please Click 'Save and Continue', then you can add continuously.
- If you only need to add one device, please click 'OK'.
- If you don't want to add, please click 'Cancel'.

3.3.4 Close window

VMS
VideoCamera Manage System

Home
 DeviceManager

click the cross to close the window

Has been discovered devices:

Name	CloudID	IP/Port	Vendor	Group
10.10.13.14	d87dd31365d54e59	10.10.13.14:34514	XM	Default Gr...
10.10.13.21	03ba70ce84f6ced8	10.10.13.21:34521	XM	Default Gr...
10.10.13.22	d8628f0893b2398c	10.10.13.22:34522	XM	Default Gr...
10.10.13.24	d55cc41700184baa	10.10.13.24:34524	XM	Default Gr...
10.10.13.34	2ae9dcb116896246	10.10.13.34:34534	XM	Default Gr...
10.10.13.42	021fc2b9cd992cc9	10.10.13.42:34542	XM	Default Gr...
10.10.13.43	7991eba21416dd81	10.10.13.43:34543	XM	Default Gr...
10.10.13.44	452929a058519fa2	10.10.13.44:34544	XM	Default Gr...
10.10.13.51	b6489c1d6469a267	10.10.13.51:34551	XM	Default Gr...
10.10.13.52	737afeec7f2814e2	10.10.13.52:34552	XM	Default Gr...
10.10.13.53	901c5bdc62213c89	10.10.13.53:34553	XM	Default Gr...
10.10.200.127	c0791b077a8f07d2	10.10.200.127:34567	XM	Default Gr...
10.10.200.148	4262089249e72092	10.10.200.148:34567	XM	Default Gr...
10.10.200.149	985b7310f650bf45	10.10.200.149:34567	XM	Default Gr...
10.10.200.227	fff030b7151a37c4	10.10.200.227:34567	XM	Default Gr...
10.10.200.247	beb193780740c69a	10.10.200.247:34567	XM	Default Gr...
10.10.32.127	1f104774f239348e	10.10.32.127:34567	XM	Default Gr...
10.10.32.187	4f85f5032eed1676	10.10.32.187:34567	XM	Default Gr...
10.10.32.194	0c4d52f992a3e428	10.10.32.194:25001	XM	Default Gr...
10.10.32.213	af850de1220ae29f	10.10.32.213:34567	XM	Default Gr...
10.10.32.242	1c0a3bf642888f85	10.10.32.242:34567	XM	Default Gr...
10.10.32.245	e0ca510481b13758	10.10.32.245:34567	XM	Default Gr...
10.10.32.42	26e0667b13bdec64	10.10.32.42:34567	XM	Default Gr...
10.10.32.71	12184db7e85c4e25	10.10.32.71:34567	XM	Default Gr...
10.10.33.116	47e4984d00b84016	10.10.33.116:34567	XM	Default Gr...
10.10.33.140	60050439940bda7e	10.10.33.140:34567	XM	Default Gr...

Search Again



Has been added devices:

Name	CloudID	IP/Port	Group	Status
10.10.200.222	eda302bb7324625f	10.10.200.222:34567	support	Offline
10.10.200.153	2033a25dee685131	10.10.200.153:34567	support	Connected
10.10.200.224	c6dea88c51eeb799	10.10.200.224:34567	support	Connected
10.10.200.225	6d674401dc12ad62	10.10.200.225:34567	support	Connected
10.10.200.226	c0d3fb97e9b84571	10.10.200.226:34567	support	Connected
10.10.13.11	bd0f8f6243de7315	10.10.13.11:34511	exhibition room	Connected
10.10.200.247	beb193780740c69a	10.10.200.247:34567	support	Offline
10.10.13.14	d87dd31365d54e...	10.10.13.14:34514	exhibition room	Connected
10.10.13.12	094cc4ae99d11565	10.10.13.12:34512	exhibition room	Connected

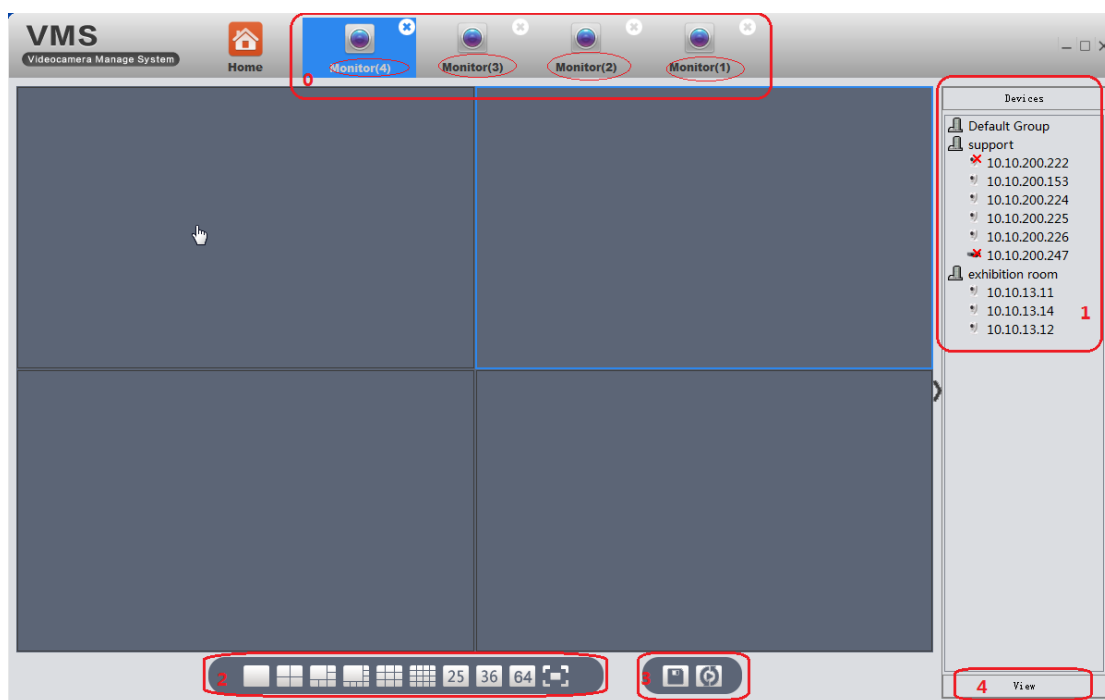
☐ In order to login device, modify ip automatically

Click the cross to close the window(as shown in the above pic).

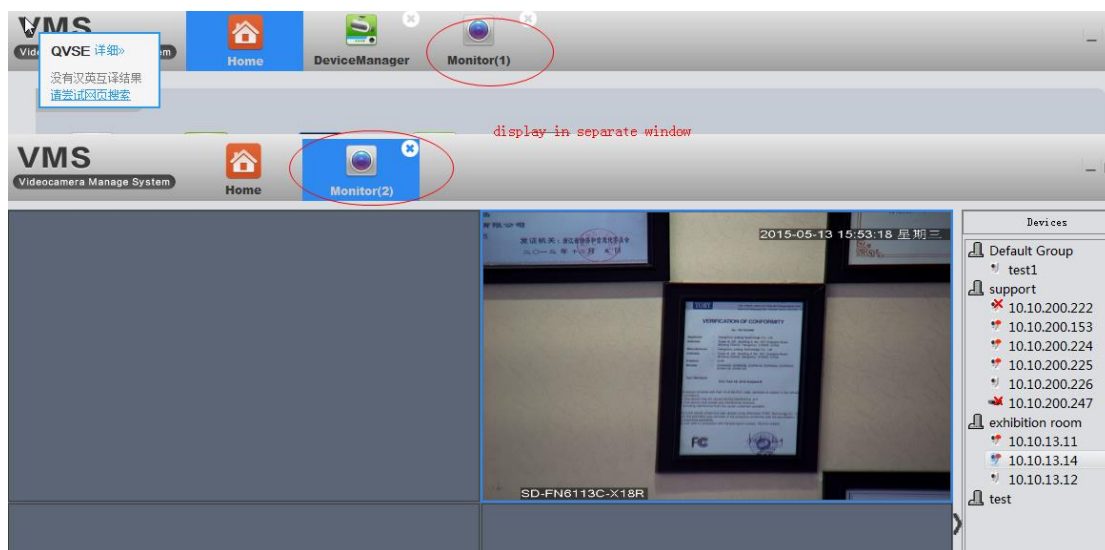
3.4 Monitoring

1	Devices list. You will find all the devices you added, arranged in groups. Display devices' name and device status, the red cross means the device is not online
2	Support 1/4/6/8/9/16/25/36/64 split. Support Maximize window
3	 save view  tour(see 3.11)
4	View(see 3.4.1)


✧ There will be description when you put mouse on the icon



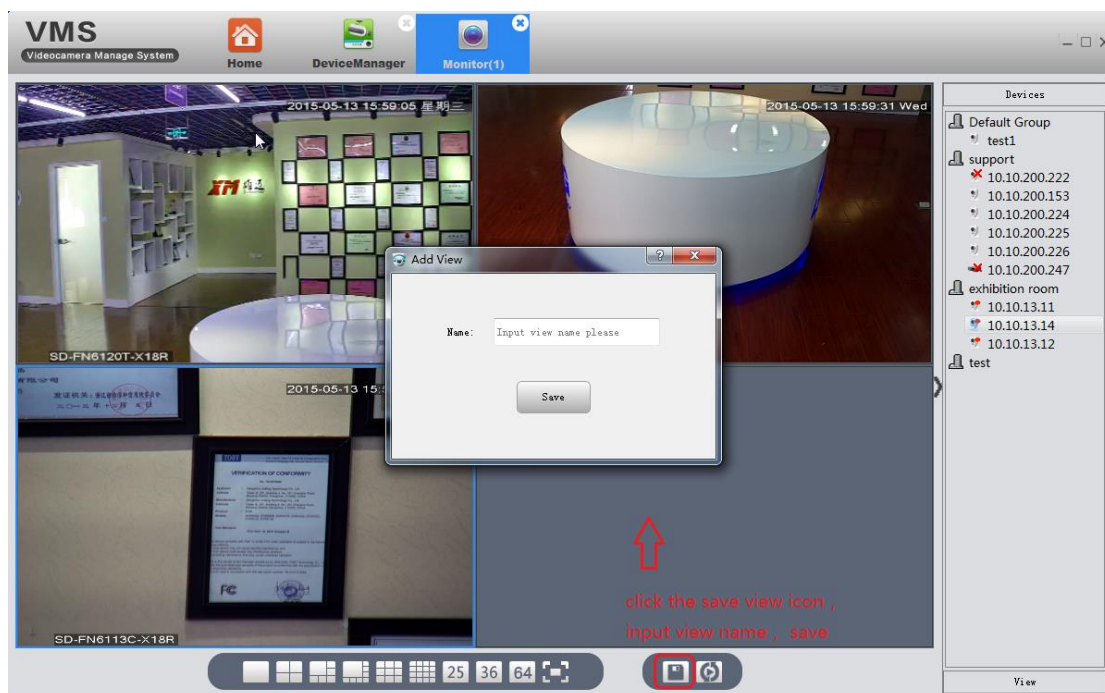
- ❖ VMS support up to 4 windows at same time(0). Click and drag, each can be dragged out into a separate window. This is very convenient for multiple screen monitoring. Each window can see 64 channels at most, $64 \times 4 = 256$. So, in theory, you can see 256 at most. As said in overviews, the actual preview number is limited by the properties of the server, the resolution of devices (bit rate), network bandwidth etc.



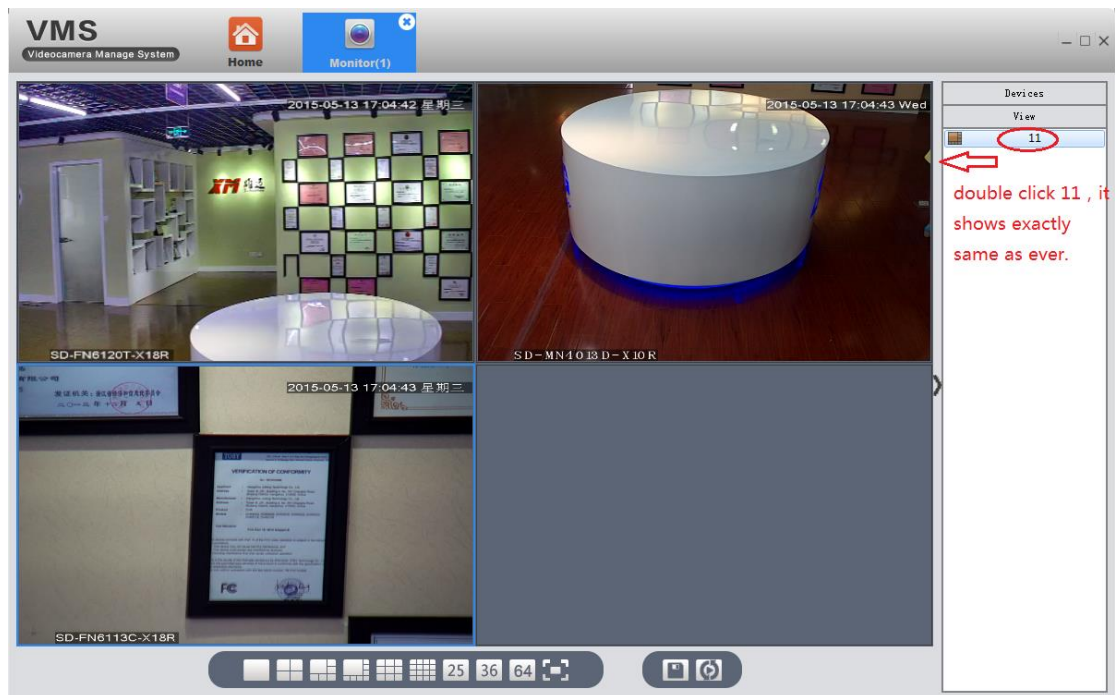
3.4.1 View

Double click the device name in the right list, or right click to choose main/extra stream to connect real-time video. If you wanna the VMS remember the view, please click 'save view' icon , save the current view. For example:

Firstly, I connect the devices as the following pic shows, then I save that view as 11.

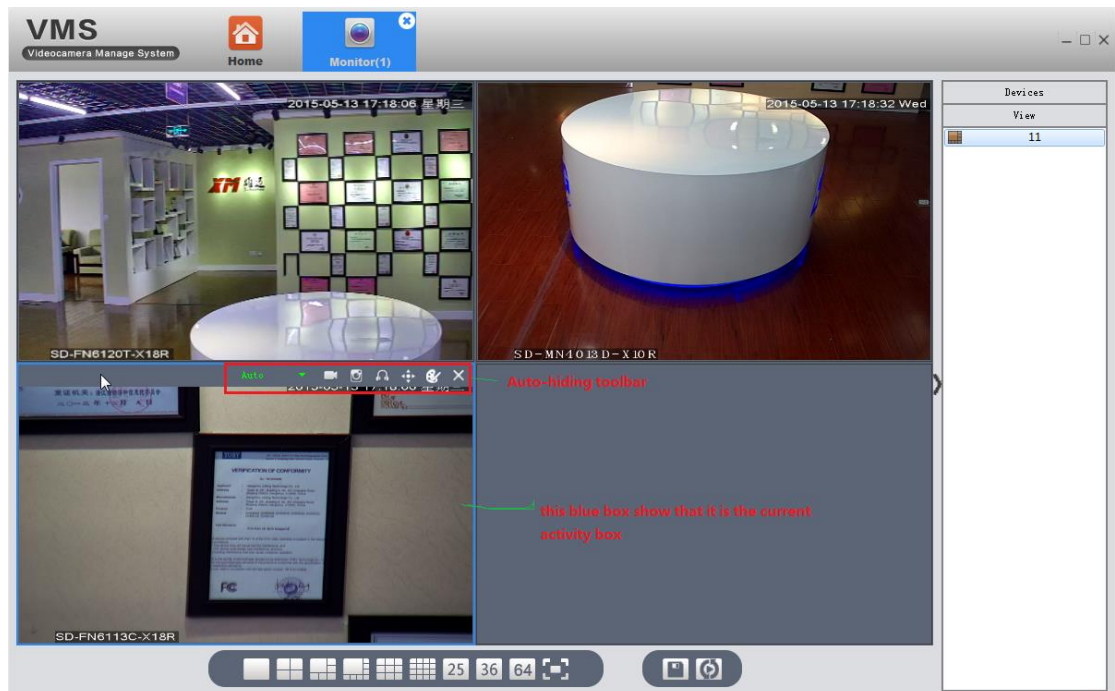


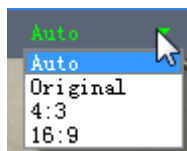








next time, I don't have to connect one by one again, just need to double click the saved view 11. And it will show exactly same as ever.



3.4.2 other features

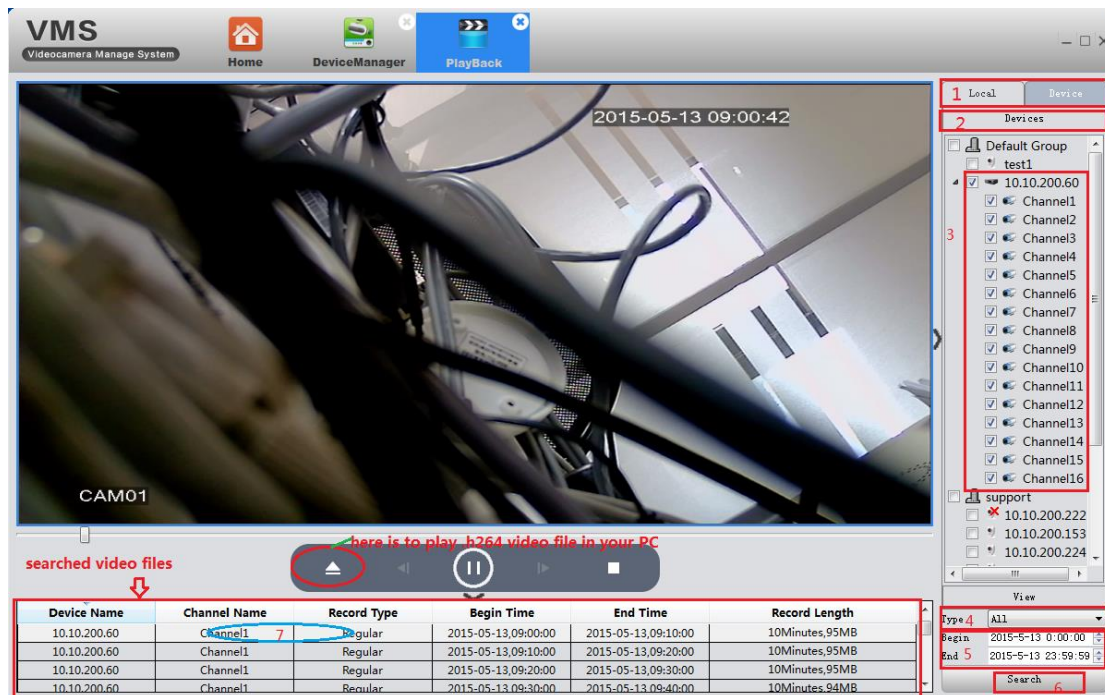
Put mouse on the top of current activity box, the auto-hiding toolbar will appear.



	Choose display scale, auto resize turned on by default.
	Temporary manual record
	Instantaneous screenshots
	Click to enable audio
	
	Adjust the color of video on VMS, Not of the device. 
	Disconnect the video

3.5 Playback

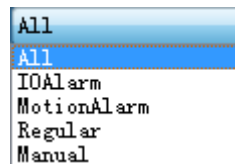
Click Playback icon in main interface.



Step 1: Choose local(PC) or devices according to where the video is stored.

Step 2: It shows the selection result in step 1.

Step 3: Choose query objects, from a group ,a device to a specific channel of a DVR.



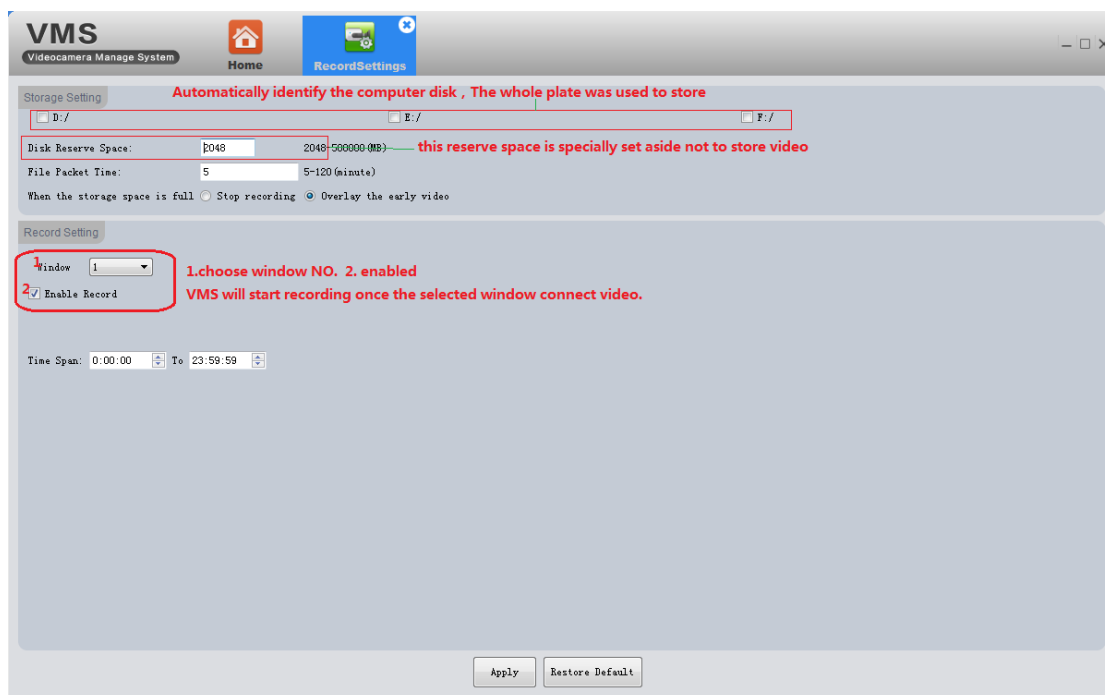
Step 4: Choose video type

Step 5: Choose date and time

Step 6: Click Search

Step 7: All video files that conform with search criteria are displayed at bottom left. Double click any file, start to play.

3.6 Record Settings



3.6.1 Storage settings

- Automatically identify the PC disk. The whole disk is used for storing.
- The disk reverse space is specially set aside not to store video

3.6.3 Record settings

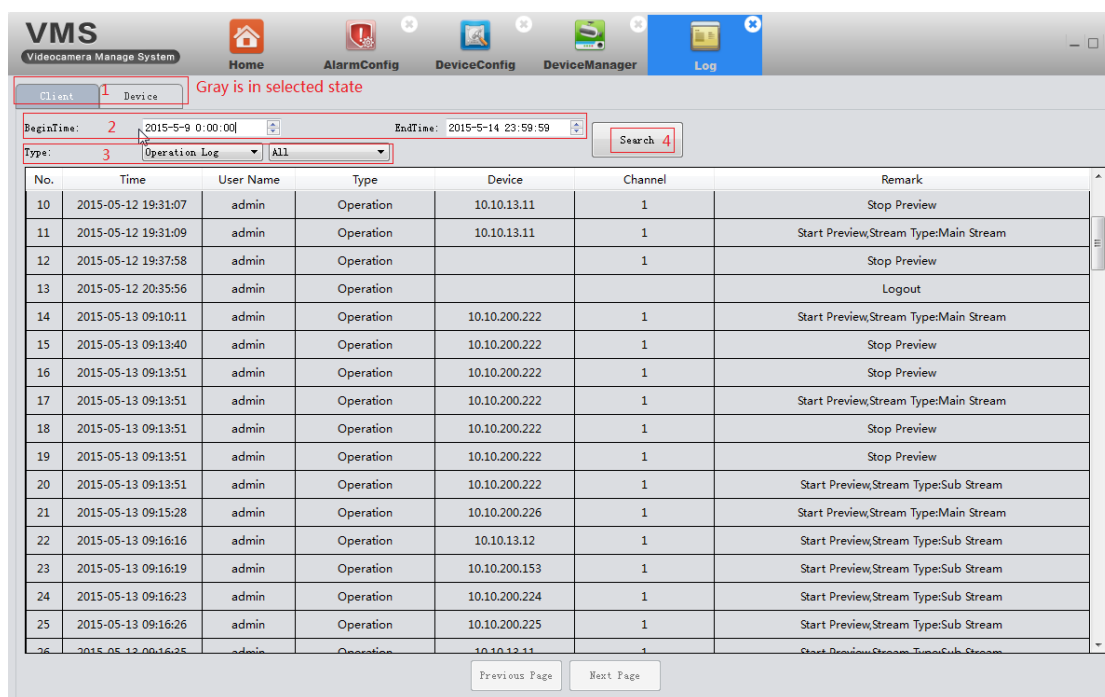
1. Select window
2. Tick enable
3. Click Apply to save

VMS will start recording once the selected window connect video.

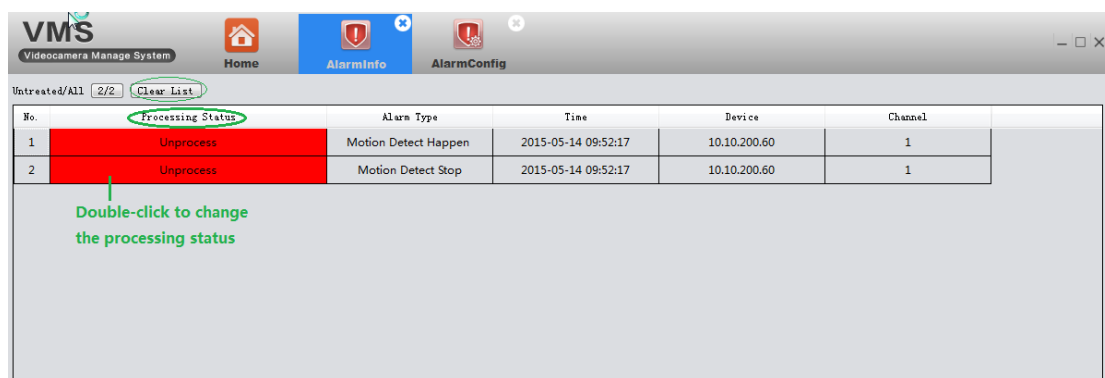
- Restore default---reset all record settings of VMS.

3.7 Log

On this page, you can search the operation Log of the client and device.



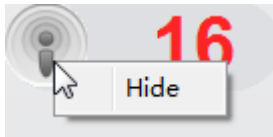
3.8 Alarm info



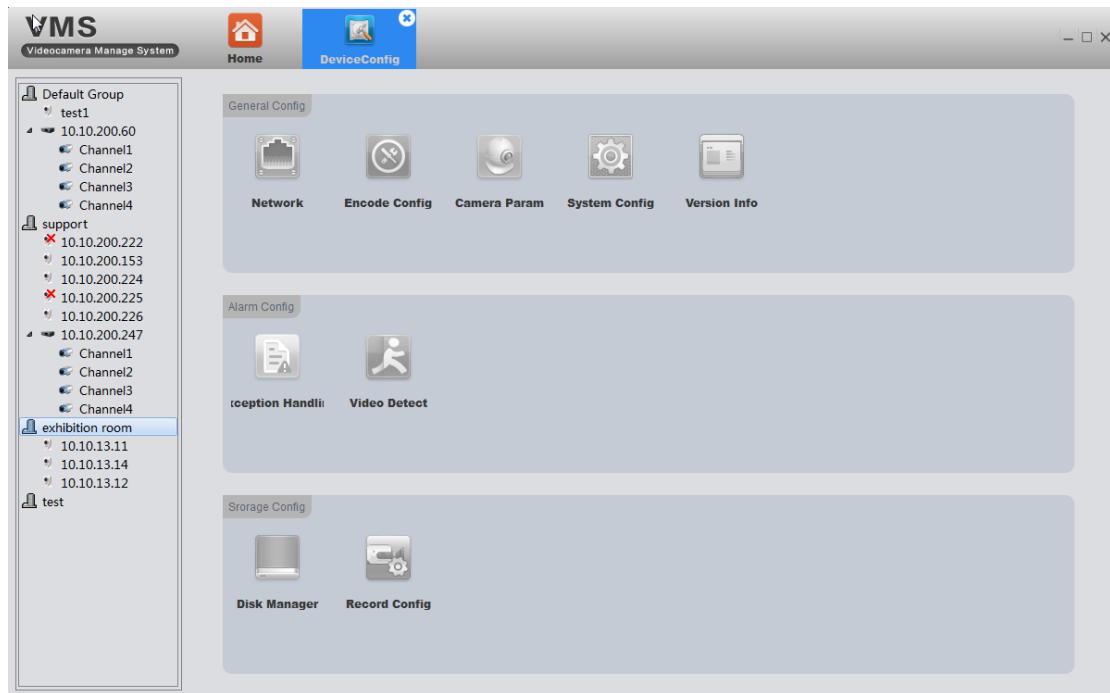
It shows all alarm info detected by VMS .

Red marks mean unprocessed. Double-click to change the processing status.

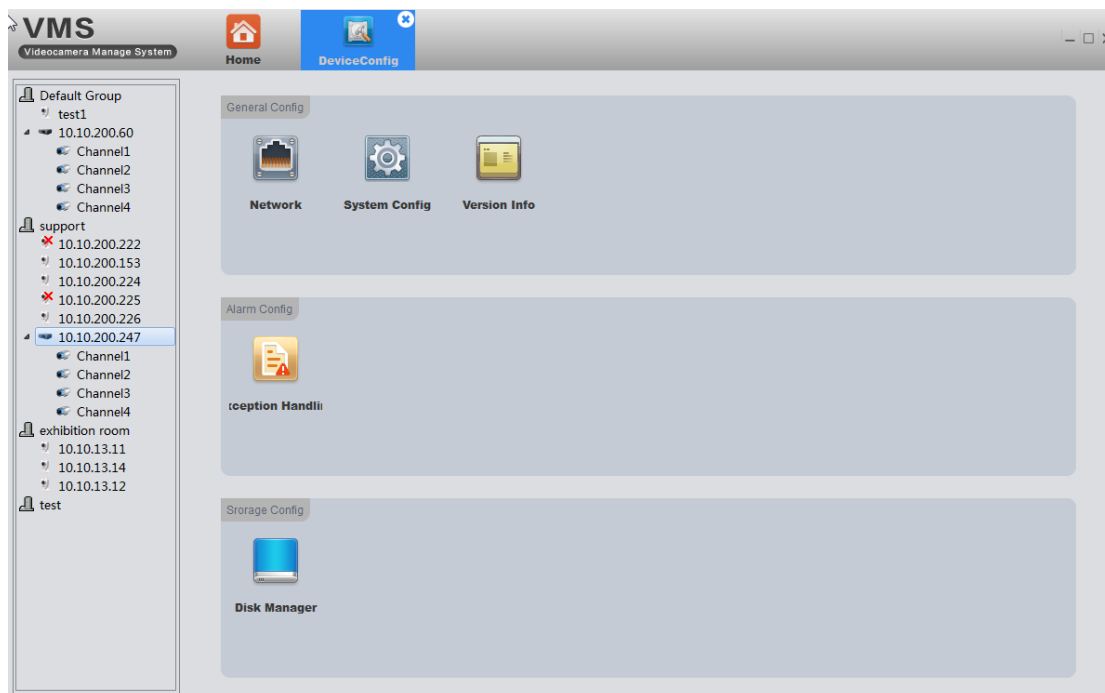
- ❖ When VMS is running, you will find an alarm message floating window at the top right corner. You can click to read the alarm message or right click to hide it.
- ❖ If you wanna VMS show alarm prompt, you must enable the alarm features both on device(see 3.9.7)and VMS(see 3.10)



3.9 Device Config



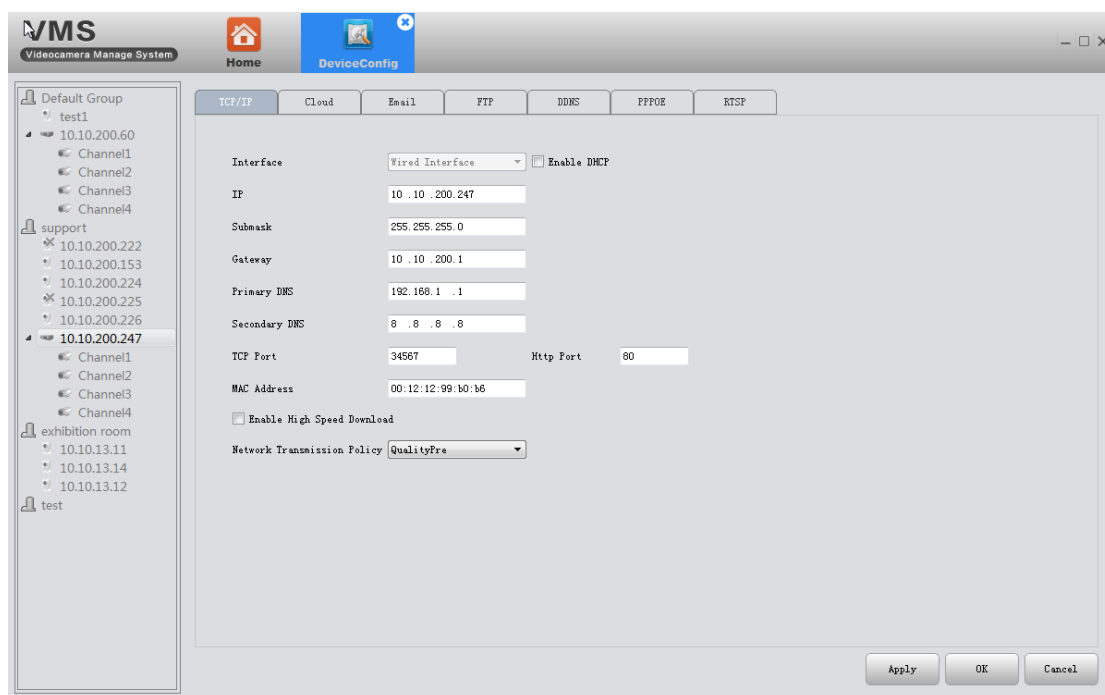
- All icon is gray before you choose a device. It will show the corresponding function-option according to the device type you choose.
- Full function-option for IPC(as shown in above pic).
- For NVR, there is no Encode and Camera Parameters as the following pic shows.



Click on the corresponding function to set and operate .

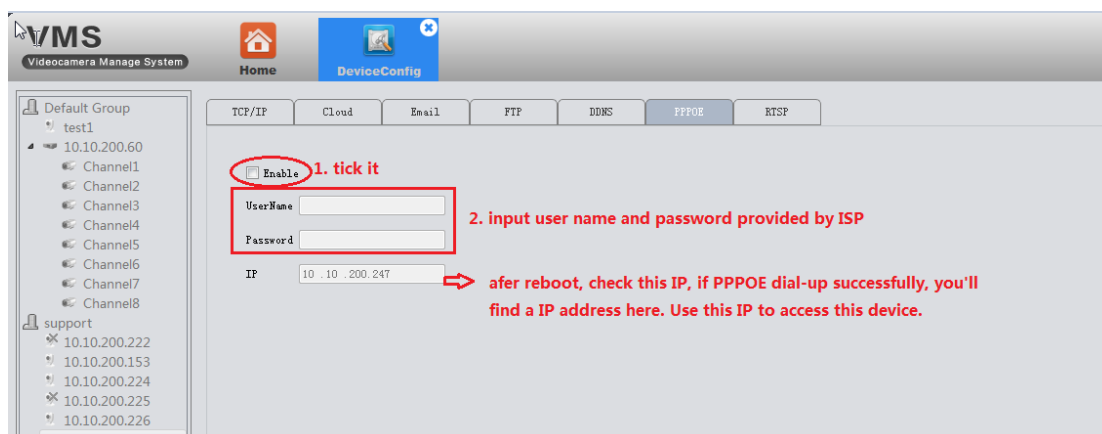
3.9.1 Network

3.9.1.1 Set device's IP



3.9.1.2 PPPOE

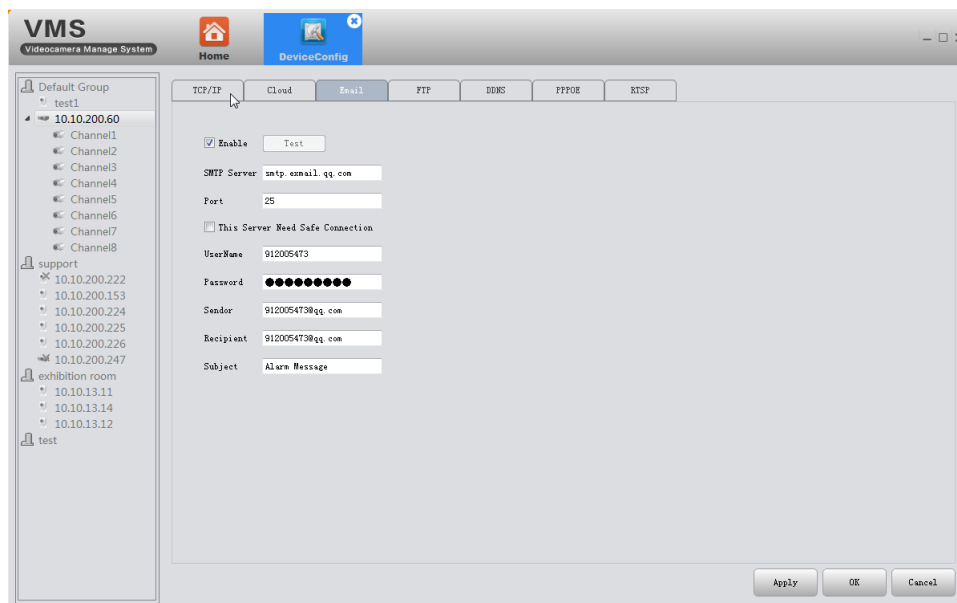
- 1) Why: Device can build a connection with internet based on PPPOE.
- 2) How:
 - ① the cable connected to device's Ethernet port must support PPPOE;
 - ② plug-in cable, then input user name and password provided by ISP.



- ③ Reboot the device.

3.9.1.3 Email

- 1) Why: with necessary parameter settings, the device will send alarm information and snapshot picture to appointed mailbox.
- 2) How:
 - ① Before you use email, make sure your device is connecting with internet(that's because the device need to connect to the mailbox server)
 - ② Email configuration, as the following pic shows:

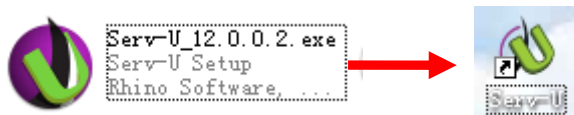


③ Click test, if it show success, please go to mailbox to check whether you get the test mail.

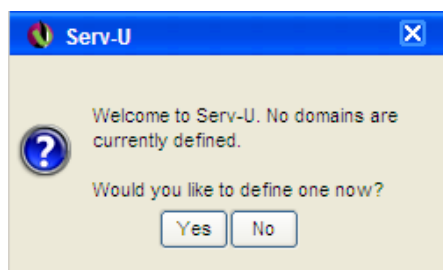
3.9.1.4 FTP

- 1) Why: FTP is available only when alarm happens, it can upload related record files and snapshot pictures to FTP server.
- 2) How:
 - You need to build a FTP server first if you don't have a ready-made FTP server . Here is a way to build a FTP server by Serv-U software.

- a. Install the Serv-U software

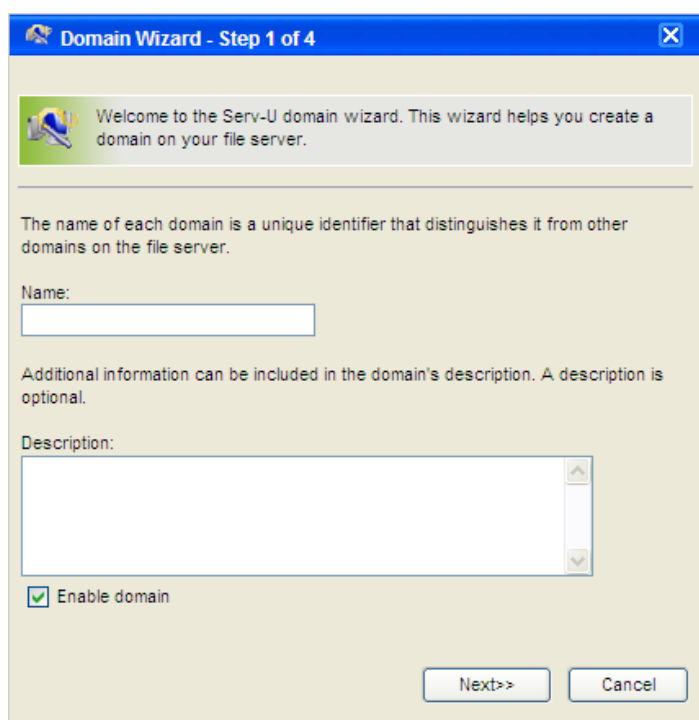


- b. After installing the software, it will appear the step wizard which help you to define the domains and users, see as follow pic:



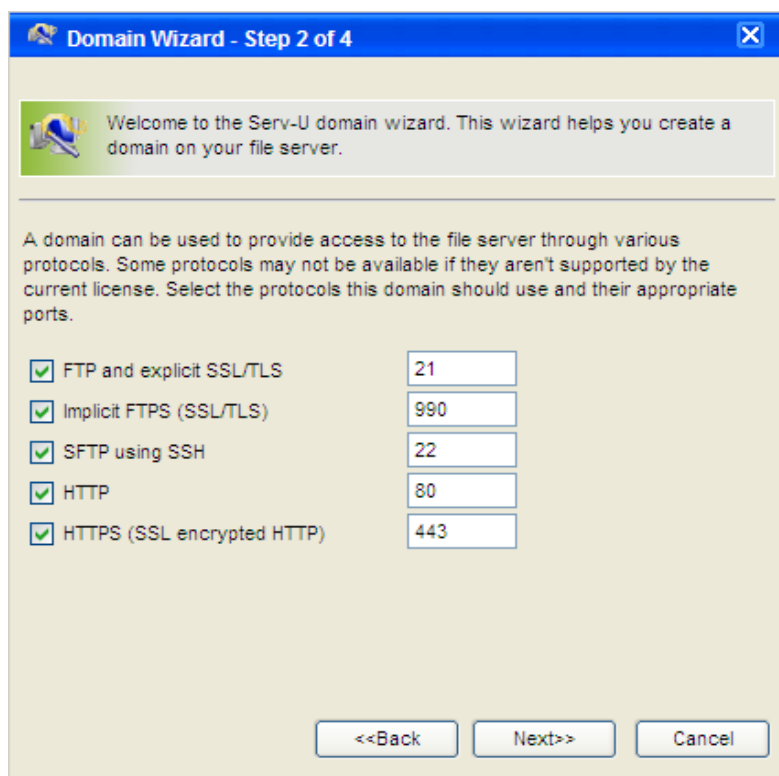
pic 1

Click "Yes", enter the next setting interface, see as pic 2



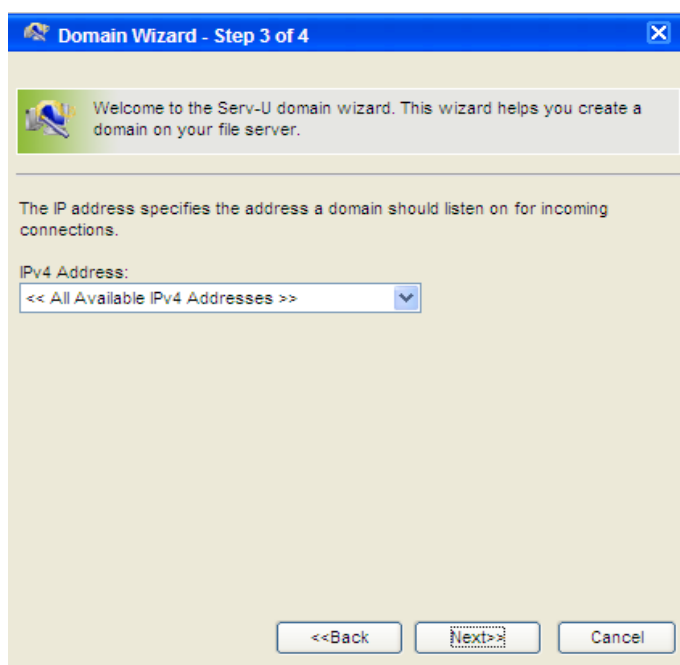
Pic 2

Input name and description, click "Next"



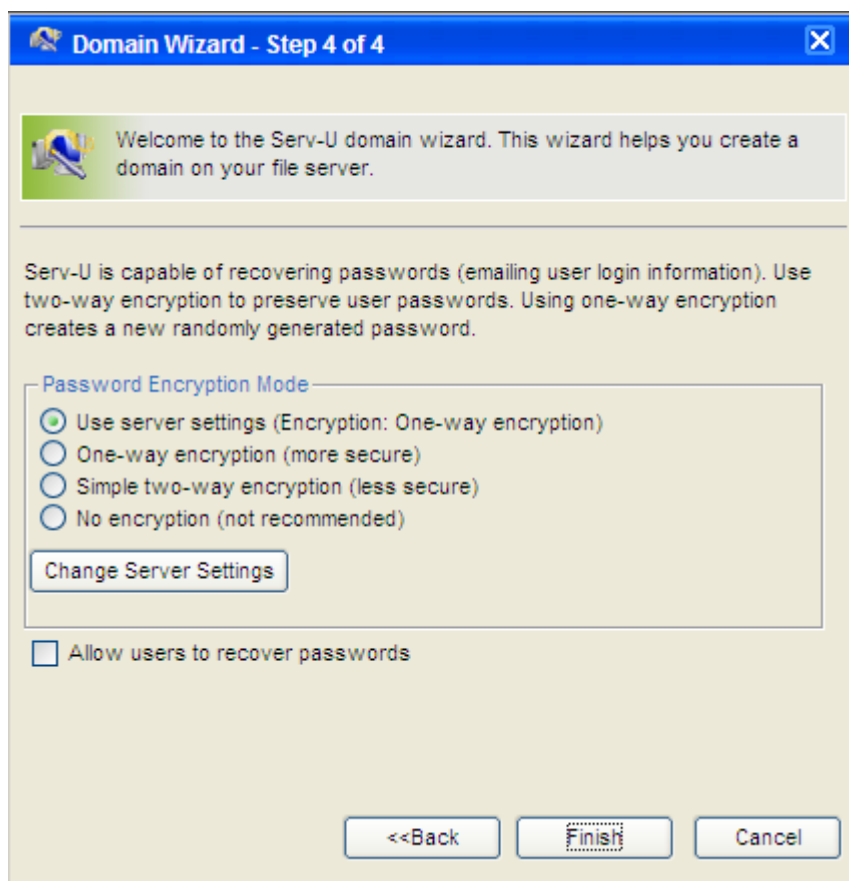
Pic 3

Click "Next", and see as pic 4. Choose your PC's IP as the built domain's IP from the drop-down box.



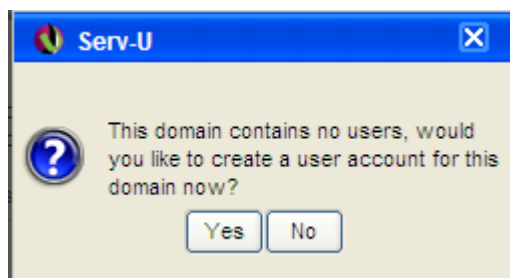
Pic 4

Click "Next"



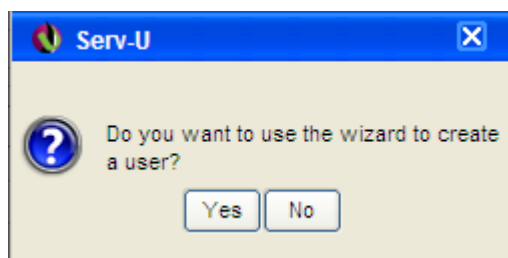
Pic 5

Click "Finish", the domain already had been defined, next step wizard will help you define users



Pic 6

Click "Yes", it will appear a tip, see as pic 7



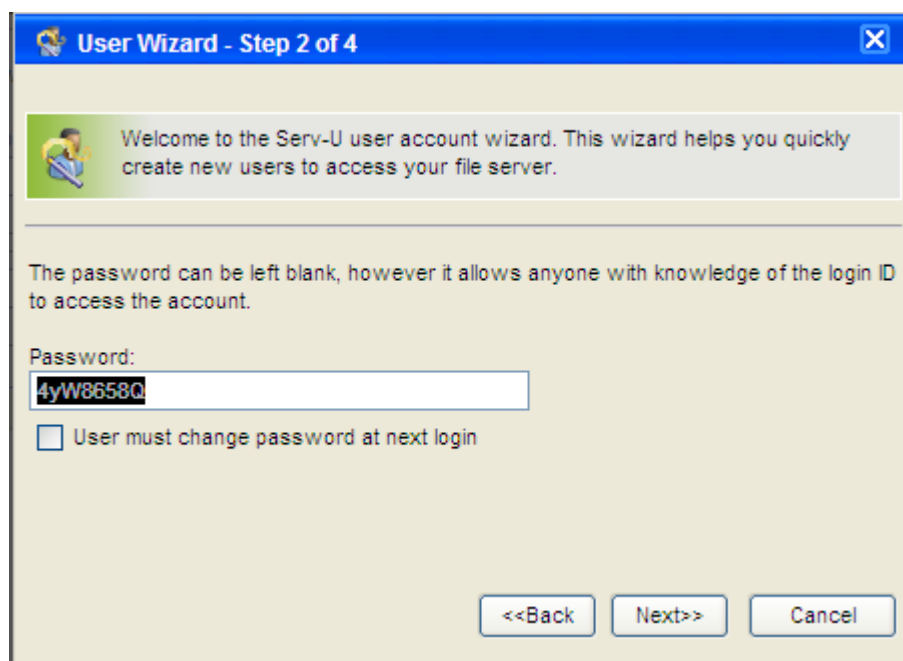
Pic 7

Click "Yes", enter the user wizard step 1

A screenshot of a "User Wizard - Step 1 of 4" dialog box. It has a blue title bar with a wizard icon. The main area contains a welcome message: "Welcome to the Serv-U user account wizard. This wizard helps you quickly create new users to access your file server." Below this, a note states: "The login ID is provided by the client to identify their account when attempting to login to the file server." There are three input fields: "Login ID:" with the text "test" entered, "Full Name:" (optional), and "Email Address:" (optional). At the bottom right, there are "Next>>" and "Cancel" buttons.

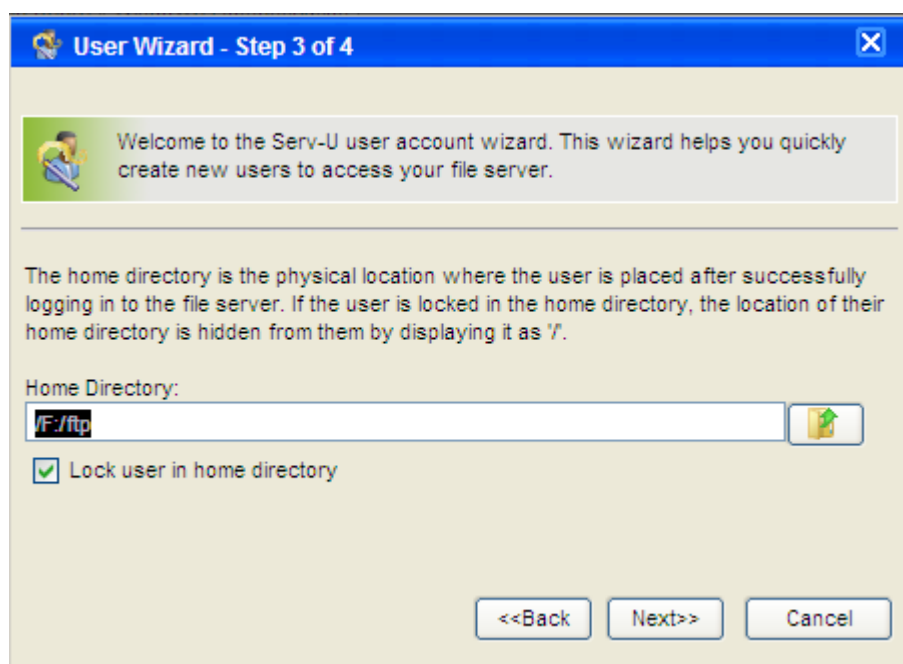
Pic 8

Input Log-in ID, Full name, Email Address messages, and click "Next"



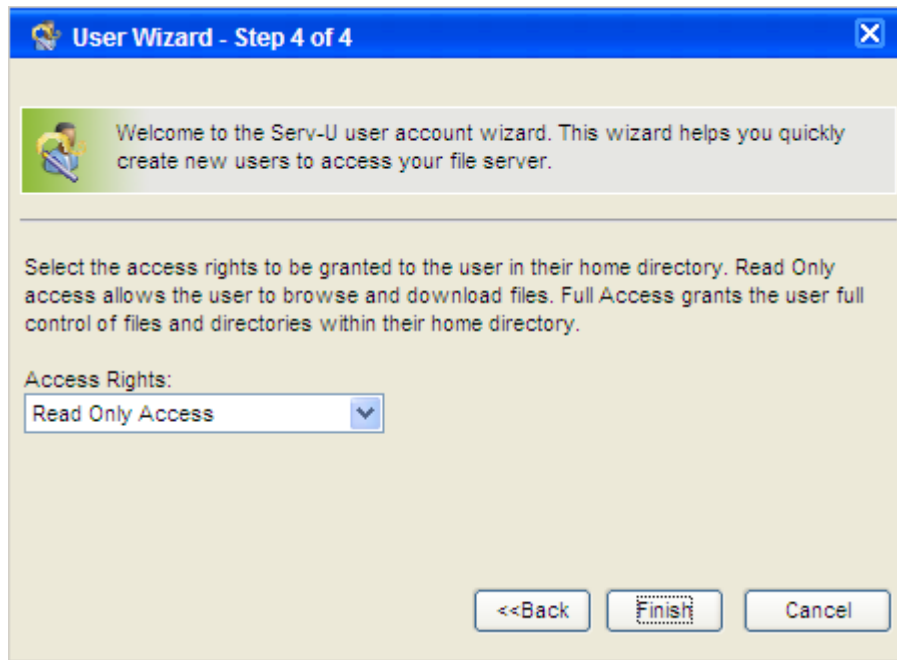
Pic 9

Click "Next"



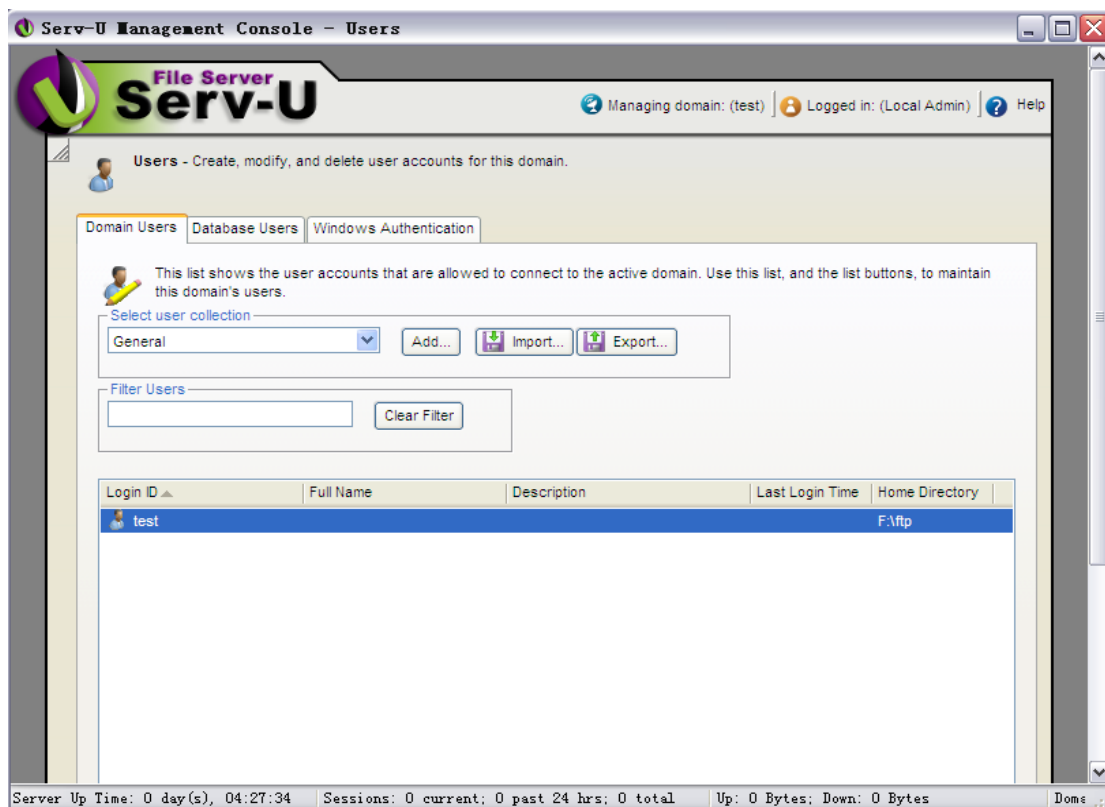
Pic 10

Setting the home directory, and click "Next"



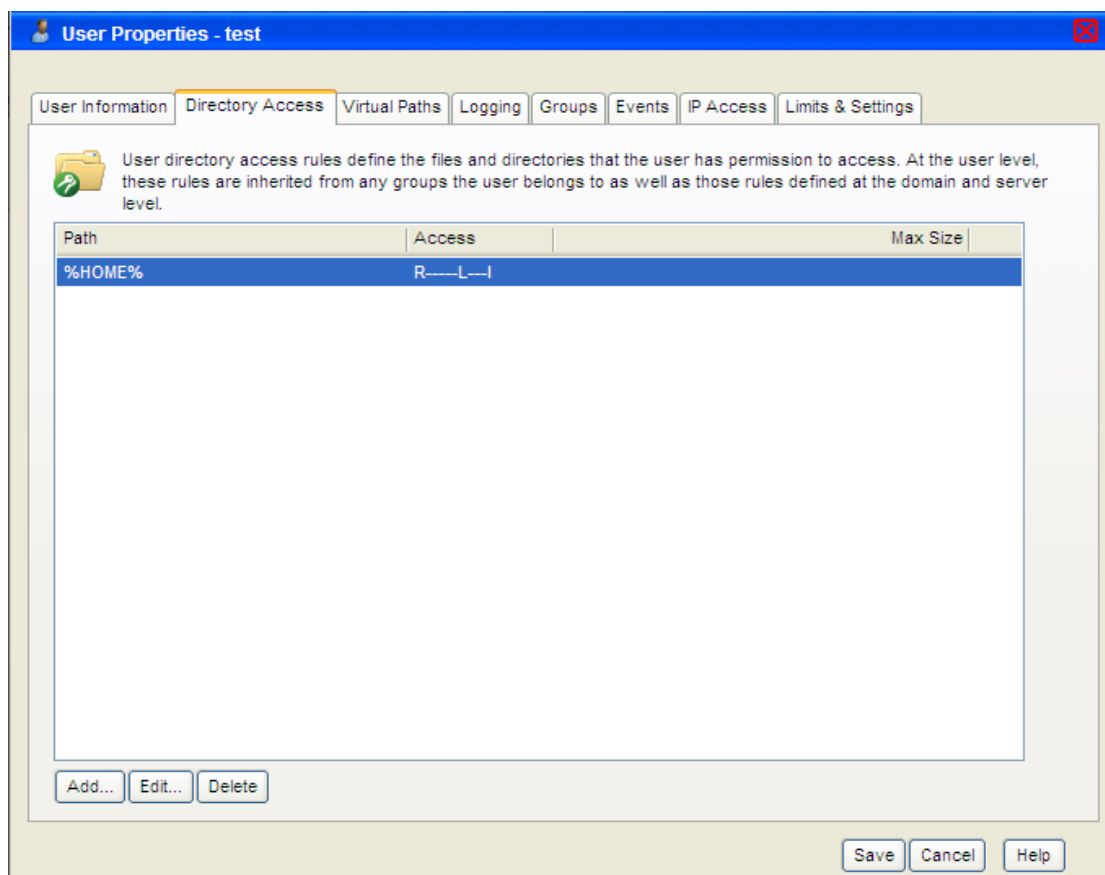
Pic 11

Click "Finish". you had defined users. next will the follow interface



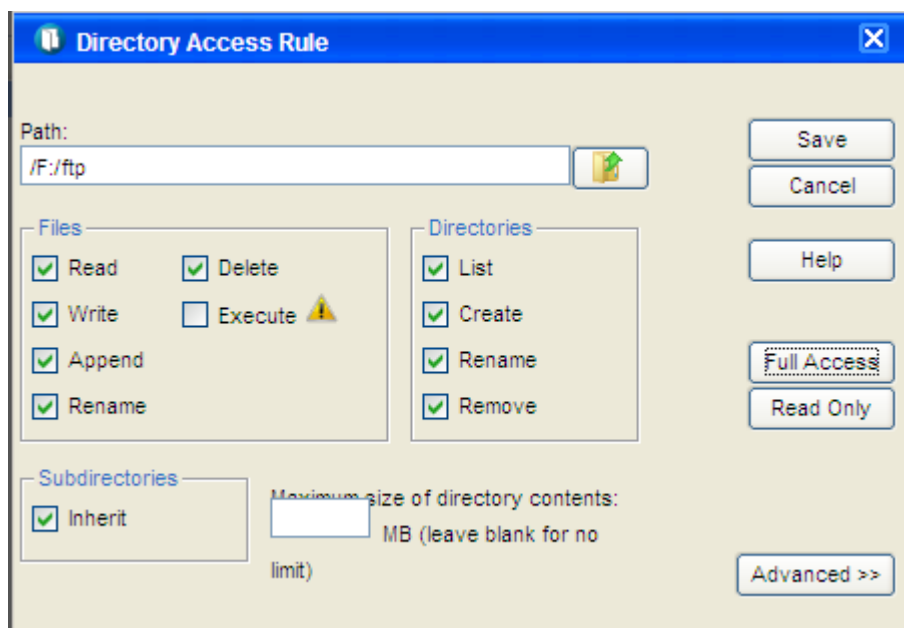
Pic 12

Click log-in ID test, setting directory, see as follow pic 13



Pic 13

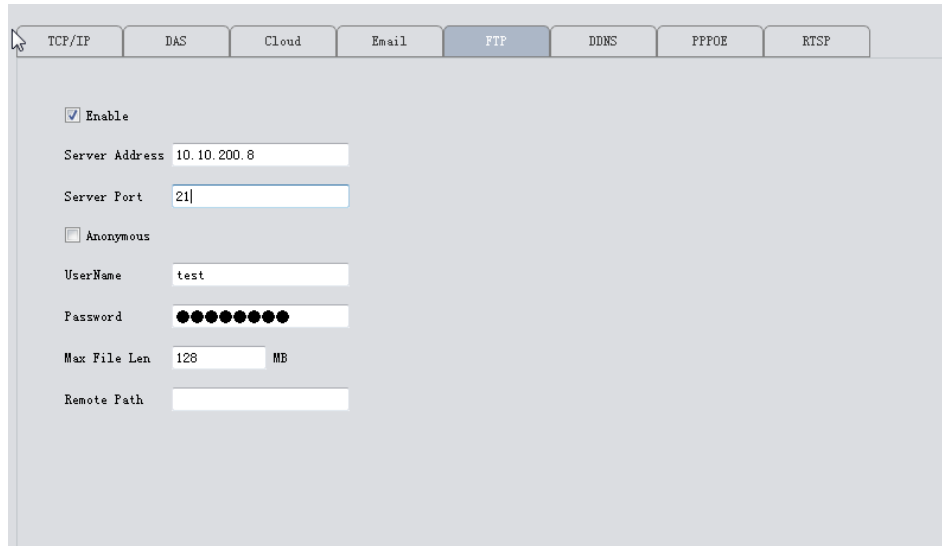
Find "directory access", click the path and setting it. see as follow pic14



Pic 14

Click "save". After finishing all above setting steps, we already had setted the FTP server.

➤ FTP settings of device



The screenshot shows a configuration window with a tabbed interface at the top. The tabs are: TCP/IP, DAS, Cloud, Email, FTP (selected), DDNS, PPPOE, and RTSP. The FTP tab contains the following settings:

- ☒ Enable
- Server Address: 10.10.200.8
- Server Port: 21
- ☐ Anonymous
- UserName: test
- Password: (masked with 12 dots)
- Max File Len: 128 MB
- Remote Path: (empty field)

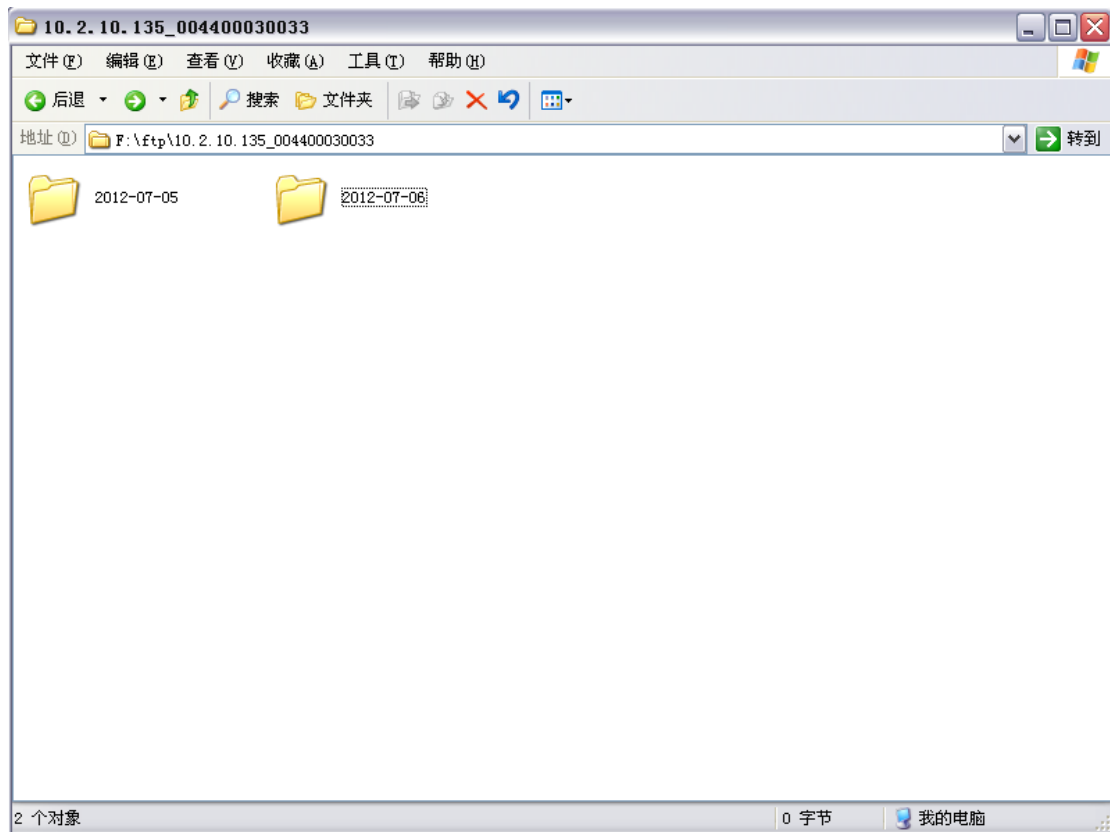
Pic 15

The server Address is the IP of the PC where you built the FTP server.

The user name and password are the same as ftp service settled.

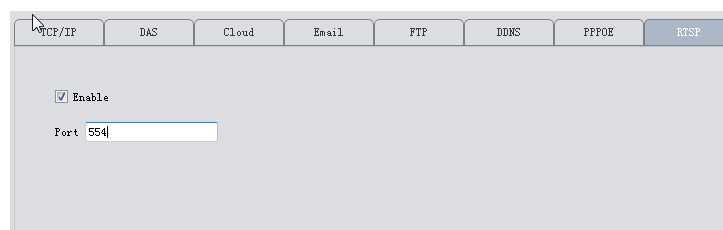
- ❖ one more thing: make sure the network between your device and FTP server is connected.

➤ when the alarm triggered, the file will be uploaded to ftp.



3.9.1.5 RTSP

- 1) Why: This service is needed when you use Non IE kernel browser(such as Safari, Google Chrome, Foxfire, Opera etc.) to access device.
- 2) How: this service is default enabled, as follows,



3.9.1.6 Cloud

The cloud service is also default enabled. As long as your device's network is connecting the Internet ,you can easily use the Cloud ID to remotely access your device without complicated settings like port forwarding.

Cloud configuration page showing the 'Enable' checkbox checked and the 'MTU' field set to 1280 Bytes.

3.9.1.7 DDNS

DDNS: Dynamic Domain Name Server.

- First you need an available domain name . Our device default support five DDNS type :CN99/DynDns/Oray/NO-IP/MYQ-SEE.
- On this page, binding the domain name with your device. Forwarding HTTP and TCP ports of this device in your router. Then you can use the domain name and HTTP port to web access device, or use domain name and TCP port to access device via PC/mobile client.

DDNS configuration page showing the 'DDNS Type' dropdown set to CN99, the 'Domain' field set to your.3322.org, and the 'UserName' and 'Password' fields. Red annotations highlight the 'Enable' checkbox, the 'Domain' field, and the 'UserName' and 'Password' fields.

3.9.1.8 DAS

DAS: it will auto put your device registered to Myeye server(our platform software which is used for central management of a large quantity of devices. See details in Myeye manual)

TCP/IP	DAS	Cloud	Email	FTP	DDNS	PPPOE	RTSP
<input checked="" type="checkbox"/> Enable							
SerialNO		123456					
Server Address		218.72.73.38					
Server Port		9400					
UserName		admin					
Password		●●●●					

this serial NO. is used for myeye server to identify this device. Edited by yourself.
 myeye server's address. must connected with this device
 Listen port of myeye ARS server. the default is 9400
 device's username and passport

Config in myeye server

web server
Version:3.0.0.4

- Operation Setup

- Guide
- Orgnization
- Device management
- Group
- User management

- System Setup

- Service Setup
- Central storage plan
- ALP Management
- E-Map

- Running Status

- User Status List
- Device Status List
- Alert Info
- System Log

- Local Operation

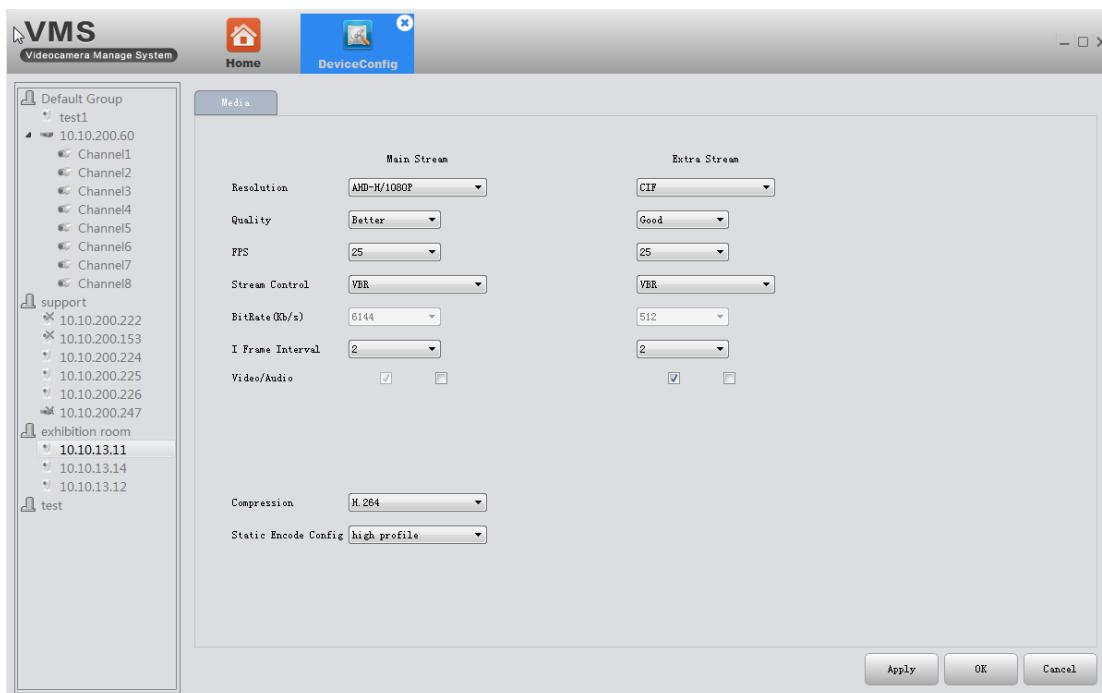
- Log out

Operation Setup -> Device management -> Detailed information

Device ID:	3301061000003	* Auto number
Belongs to:		*
Device type:	Auto-Register	choose auto-register
serialNum:		the serial NO you edit on device's DAS page
Device name:		*(20 characters)
Device IP:	10.10.48.178	server's address
port:	9500	client port of Myeye's ARS server
Channel amount:	0	*
Channel setup:		
Alarm amount:..	0	*
Alarm setup:	Please input the alarm amount first and then set alarm channel.	

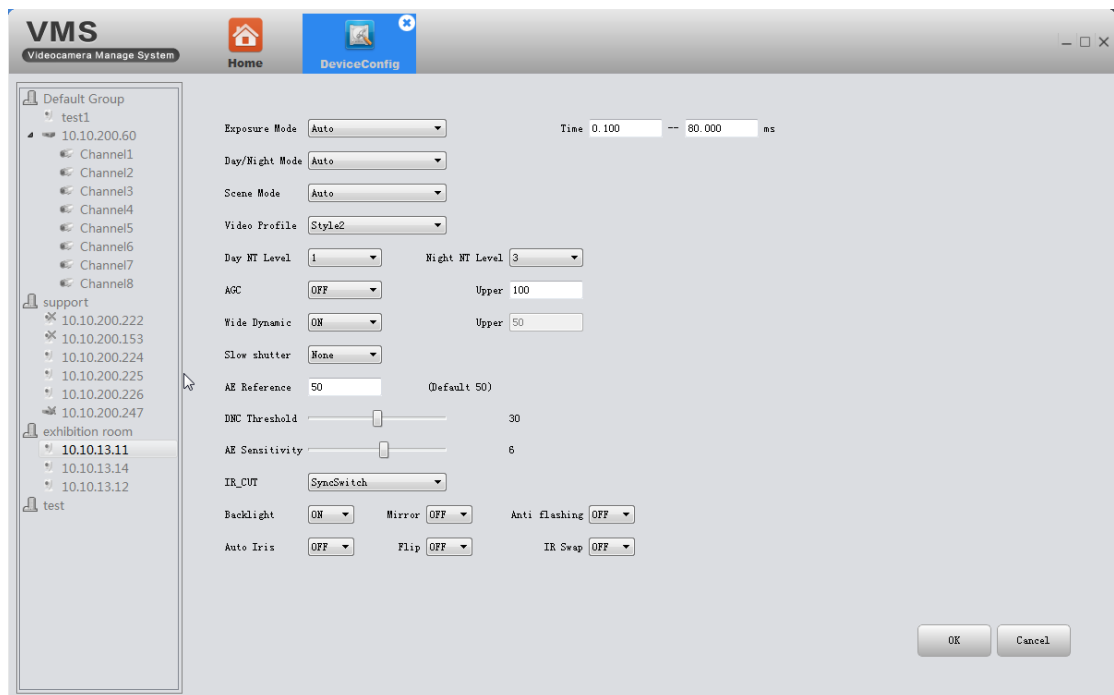
OK
Cancel

3.9.2 Encode



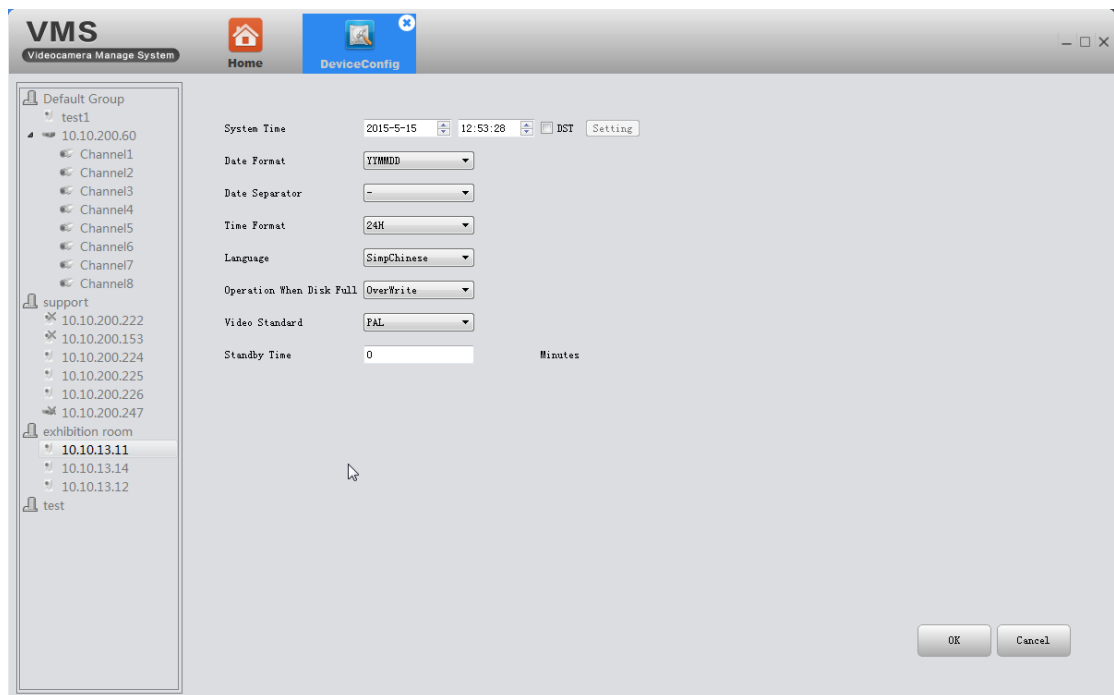
Set video/audio encode parameters of DVR /IPC. All our devices support dual stream: main stream and extra stream. You can choose adaptive resolution, FPS, quality and so on according to your needs.

3.9.3 Camera parameters



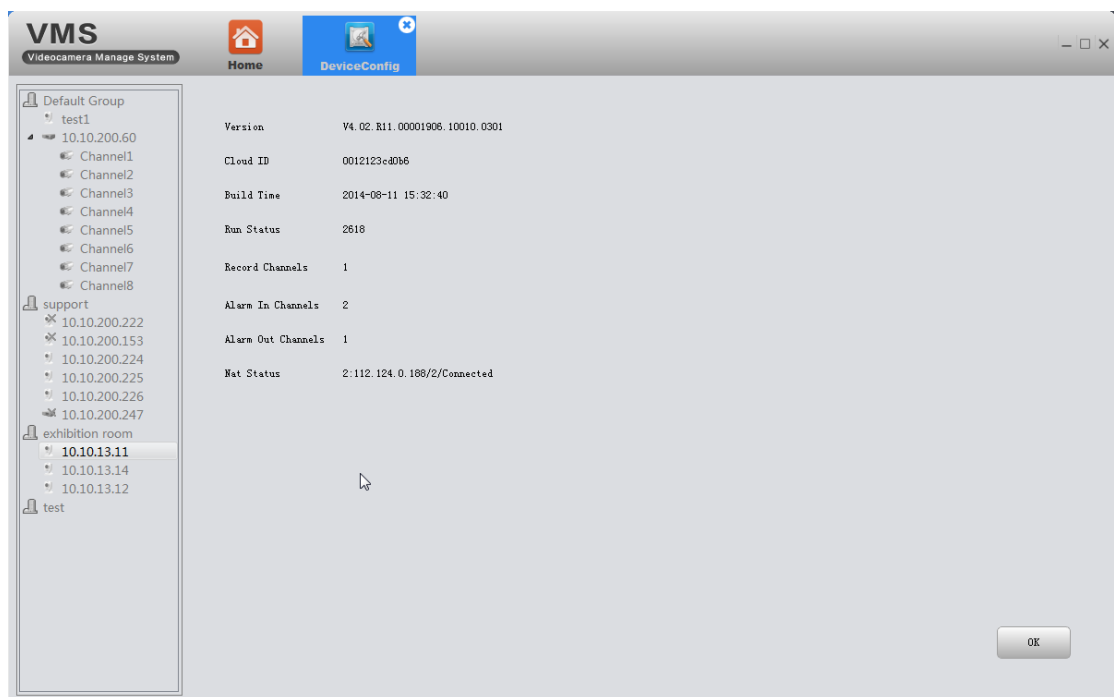
Here to modify IPC parameters, including Exposure mode, Day/Night mode, Day NT level, wide dynamic, AE reference, AGC, backlight comprehension ,slow shutter, IR_CUT swap, Flip, mirror, anti-flicker , Auto iris,etc

3.9.4 System



Here to modify device's time ,language, operation when disk is full.

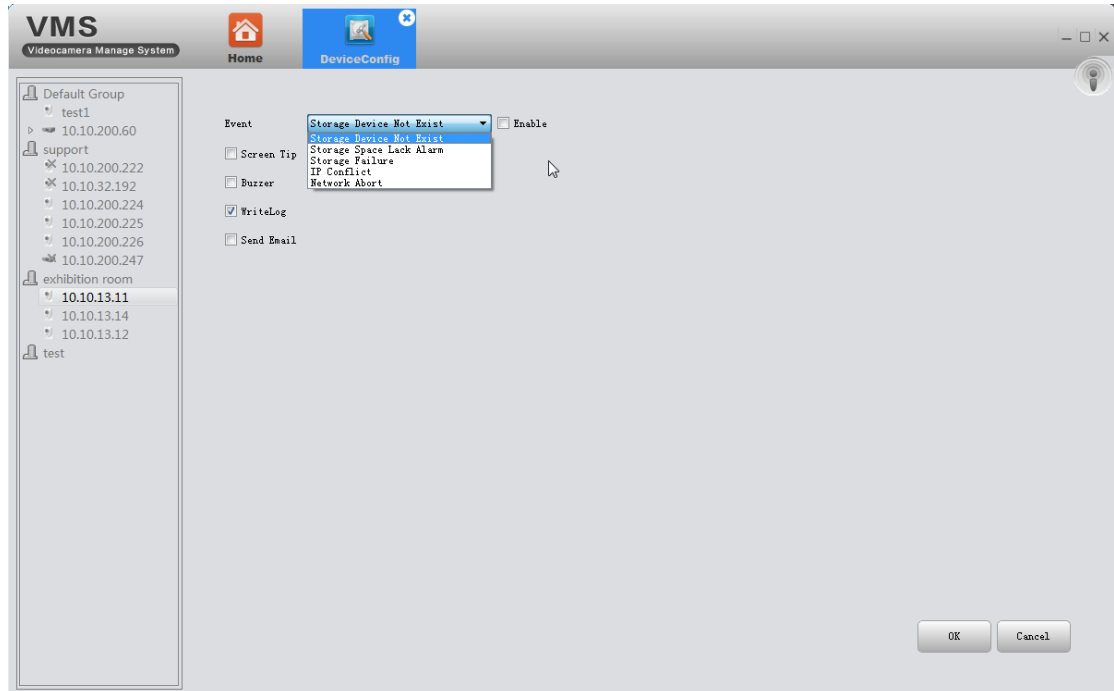
3.9.5 Version info



Display the basic information such as hardware information, firmware version,

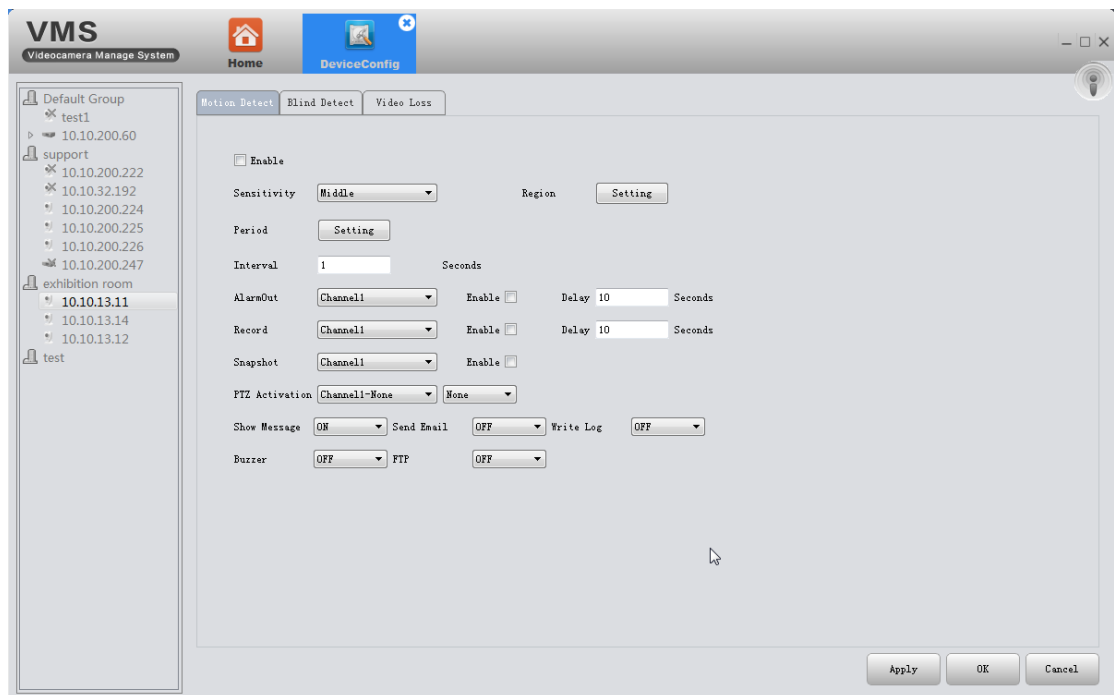
built date , serial No. and so on.

3.9.6 Exception handling



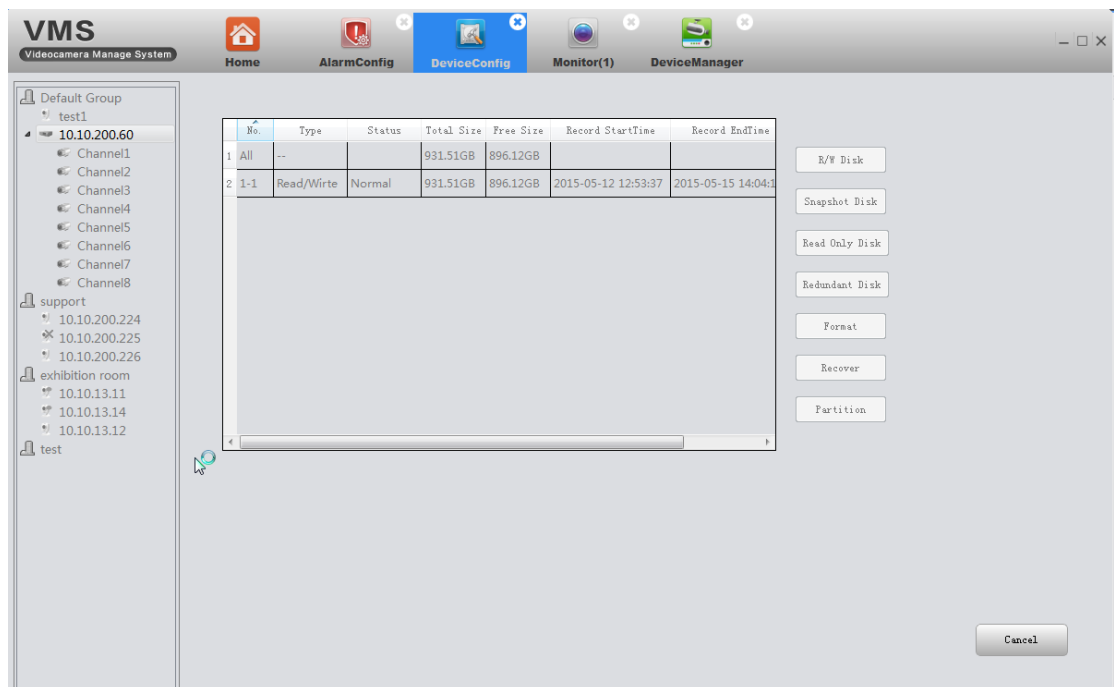
Choose event type from the drop-down box, and tick alarm type you want. The alarm info will be recorded in device's Log if you tick Write log. And if you want it to send alarm message to your mailbox, make sure the email is successfully set(see 3.9.1.3)

3.9.7 video detect

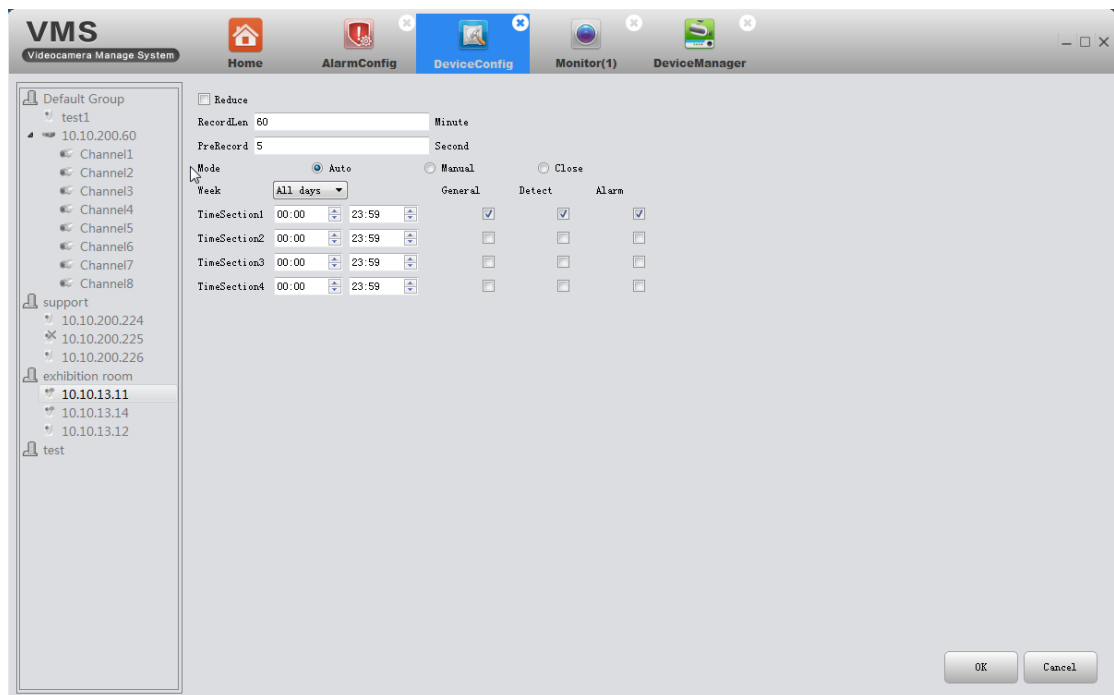


Including motion detection, blind detect, video loss.

3.9.8 Disk manager

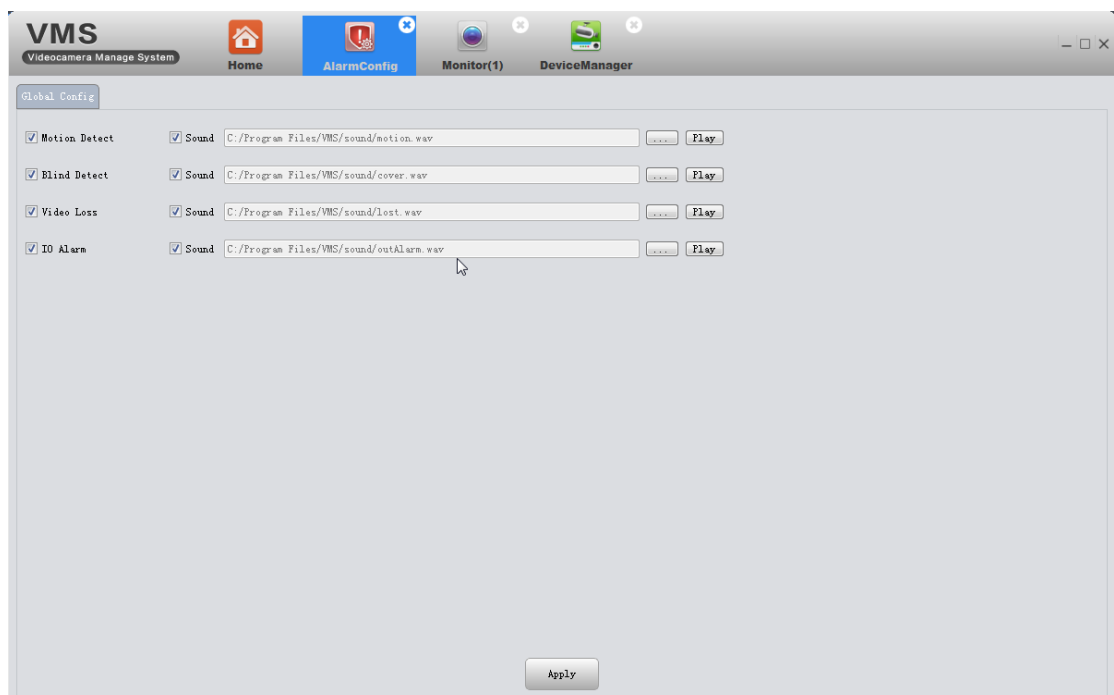


3.9.9 Record config



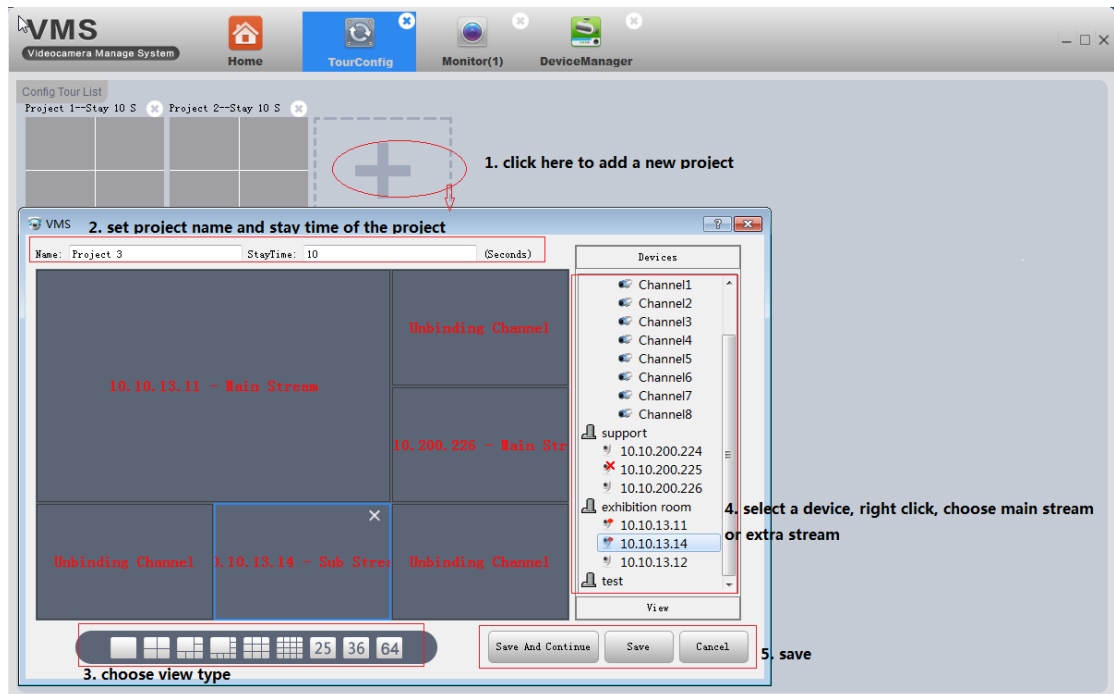
3.10 Alarm config

Alarm Config of VMS. You can set different prompt sound when alarm triggered.



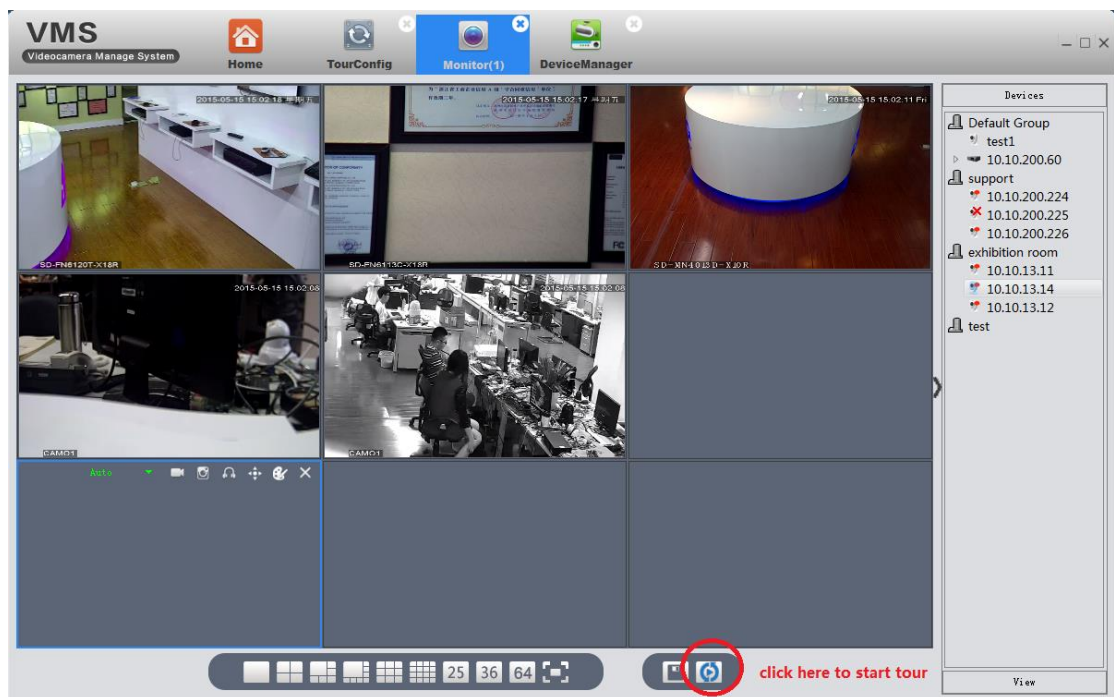
3.11 Tour

1) Add projects

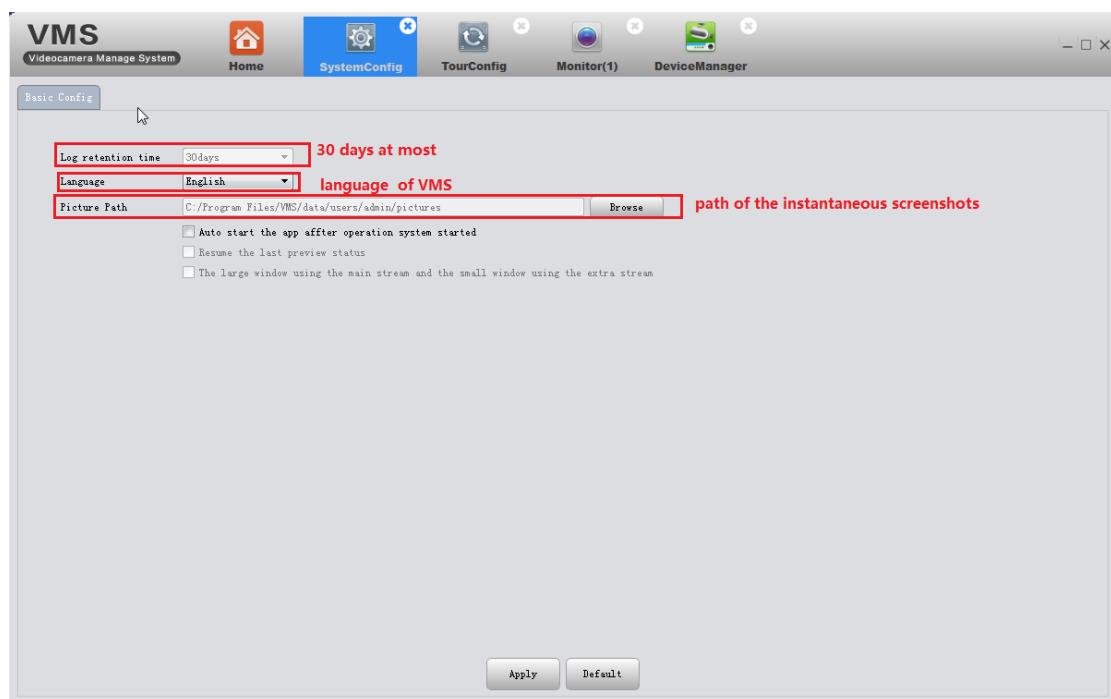


Add projects as the above pic shows.

2) On monitoring page, click tour icon to start.



3.12 System Config



3.13 Extensions

Map and Mycloud can not use at present.